

DiCFASTENERS

A Brand by Dedicated Impex Co.



WASHERS

Product Name	Page No.
Beveled Washer.....	03 - 05
Spring Lock Washer.....	06
Square Washer.....	07 - 08
Toothed Lock Washer.....	09 - 12
Plain Washer.....	13 - 16

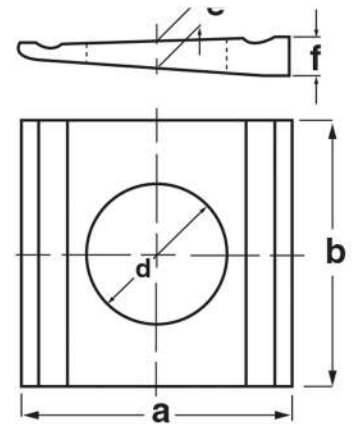


BEVELED WASHERS

DIN 434

For BOLT DIAMETER		Hole Dia. d (mm)	Dimensions in Millimetres			
Metric	Inch		a	b	e	f
M8	5/16"	9	22	22	2.9	3.8
M10	3/8"	11	22	22	2.9	3.8
M10	3/8"	11	22	22	2.9	3.8
M12	1/2"	13.5	30	26	3.7	4.9
M16	5/8"	17.5	36	32	4.45	5.9
M16	5/8"	17.5	36	32	4.45	5.9
M20	3/4"	22	44	40	5.25	7
M22	7/8"	24	50	44	6	8
M22	7/8"	24	50	44	6	8
M24	1"	26	56	56	6.26	8.5
M24	1"	26	56	56	6.26	8.5
M27	-	30	56	56	6.26	8.5
M30	1-1/8"	33	62	62	6.5	9

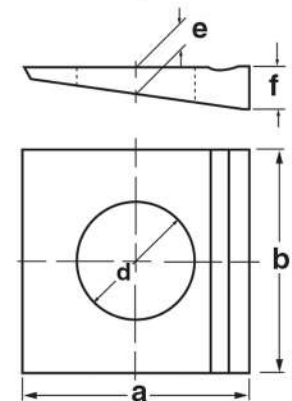
8% Slope for "U" Beams Steel, Plain



DIN 435

For BOLT DIAMETER		Hole Dia. d (mm)	Dimensions in Millimetres			
Metric	Inch		a	b	e	f
M8	5/16"	9	22	22	3.05	4.6
M10	3/8"	11	22	22	3.05	4.6
M12	1/2"	13.5	30	26	4.1	6.2
M12	1/2"	13.5	30	26	4.1	6.2
M16	5/8"	17.5	36	32	5	7.5
M20	3/4"	22	44	40	6.1	9.2
M22	7/8"	24	50	44	6.5	10
M24	1"	26	56	56	6.9	10.8
M27	-	30	56	56	6.9	10.8
M30	1-1/8"	33	62	62	7.5	11.7

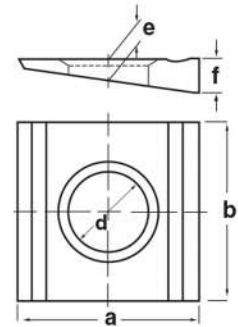
14% Slope for "I" Beams Steel, Plain



DIN 6918

For BOLT DIAMETER		Hole Dia. d (mm)	Dimensions in Millimetres			
Metric	Inch		a	b	e	f
M12	1/2"	13	30	26	3.7	4.9
M16	5/8"	17	36	32	4.45	5.9
M20	3/4"	21	44	40	5.25	7
M22	7/8"	23	50	44	6	8
M27	-	28	56	56	6.26	8.5

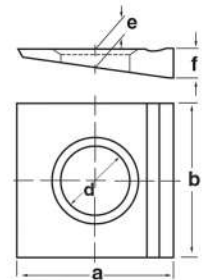
8% Slope for "U" Beams Countersunk – Steel, Plain



DIN 6917

For BOLT DIAMETER		Hole Dia. d (mm)	Dimensions in Millimetres			
Metric	Inch		a	b	e	f
M12	1/2"	13	30	26	4.1	6.2
M16	5/8"	17	36	32	5	7.5
M20	3/4"	21	44	40	6.1	9.2
M24	1"	25	56	56	6.9	10.8

14% Slope for "I" Beams Countersunk – Steel, Plain



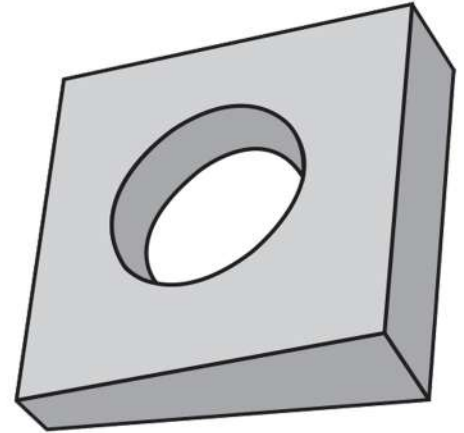
DIN 6917 and DIN 6918 are for use with DIN 6914 Hex Cap Screws

Continue...

IRON BEVELED WASHERS

Bolt Dia.	Across Flats (Square)	Thickness		Hole Dia.
		at Large End	at Taper	
1/4"	11/16"	7/32"	5/64"	5/16"
3/8"	1-1/4"	11/32"	5/32"	7/16"
1/2"	1-1/4"	11/32"	5/32"	9/16"
5/8"	1-1/2"	13/32"	5/32"	11/16"
3/4"	1-1/2"	13/32"	5/32"	13/16"
7/8"	2"	1/2"	7/32"	15/16"
1"	2"	9/16"	7/32"	1-3/32"

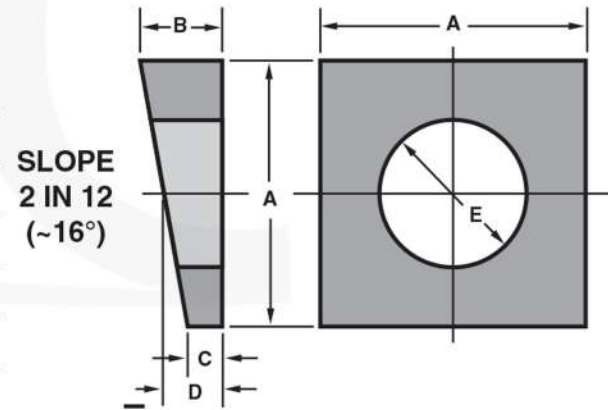
16-2/3% Slope



Plain Finish

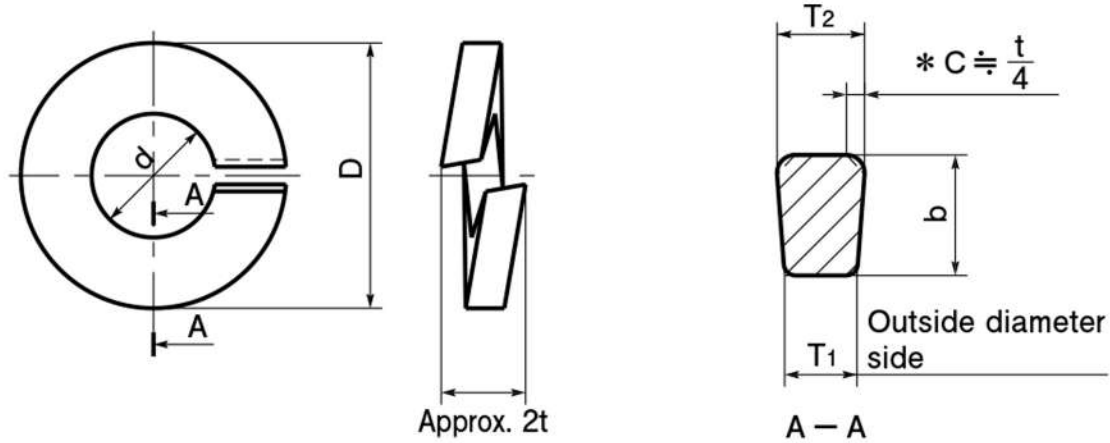
ALUMINUM (Alloy 319) BEVELED WASHERS

BOLT DIA.	A	B	C	D	HOLE DIA. E
1/4"	0.69"	0.22"	0.09"	0.16"	0.31"
5/16"	1.00"	0.31"	0.16"	0.23"	0.38"
3/8"	1.25"	0.34"	0.12"	0.23"	0.44"
1/2"	1.25"	0.34"	0.12"	0.23"	0.56"
5/8"	1.50"	0.38"	0.12"	0.25"	0.69"
3/4"	1.50"	0.44"	0.19"	0.31"	0.81"



Plain Finish

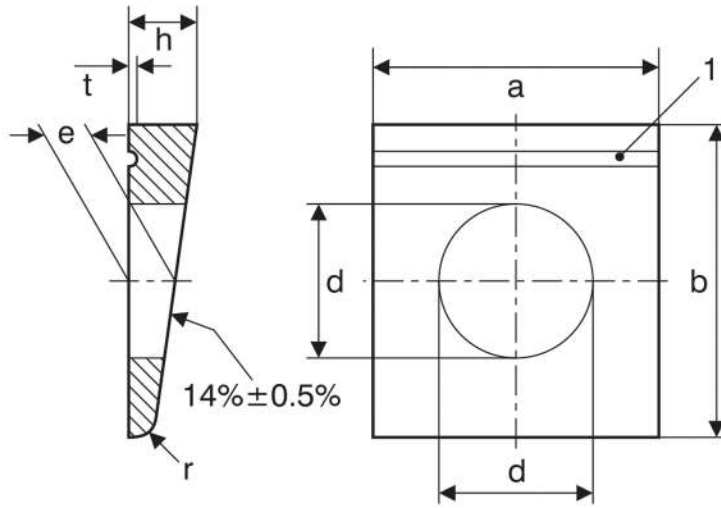
SPRING LOCK WASHERS



Unit: mm

Type	Dimensions of spring lock washers for general purpose (No.2)					Dimensions of spring lock washers for heavy load (No.3)				
Nominal Diameter	Inside diameter d		Section size (Min.)		Outside diameter D (Max.)	Inside diameter d		Section size		Outside diameter D (Max.)
	Basic Dimension	Allowance	Breadth b	Thickness $t^{(1)}$		Basic Dimension	Allowance	Breadth b	Thickness $t^{(1)}$	
2	2.1	+0.25 0	0.9	0.5	4.4					
2.5	2.6	+0.3 0	1	0.6	5.2					
3	3.1		1.1	0.7	5.9					
(3.5)	3.6		1.2	0.8	6.6					
4	4.1		1.4	1	7.6					
(4.5)	4.6	+0.4 0	1.5	1.2	8.3					
5	5.1		1.7	1.3	9.2					
6	6.1		2.7	1.5	12.2	6.1	+0.4 0	2.7	1.9	12.2
(7)	7.1	+0.5 0	2.8	1.6	13.4	7.1		2.8	2.0	13.4
8	8.2		3.2	2	15.4	8.2		3.3	2.5	15.6
10	10.2	+0.6 0	3.7	2.5	18.4	10.2		3.9	3.0	18.8
12	12.2		4.2	3	21.5	12.2		4.4	3.6	21.9
(14)	14.2	+0.8 0	4.7	3.5	24.5	14.2		4.8	4.2	24.7
16	16.2		5.2	4	28	16.2		5.3	4.8	28.2
(18)	18.2		5.7	4.6	31	18.2	+0.8 0	5.9	5.4	31.4
20	20.2	+1.0 0	6.1	5.1	33.8	20.2		6.4	6.0	34.4
(22)	22.5		6.8	5.6	37.7	22.5		7.1	6.8	38.3
24	24.5	+1.2 0	7.1	5.9	40.3	24.5		7.6	7.2	41.3
(27)	27.5		7.9	6.8	45.3	27.5		8.6	8.3	46.7
30	30.5	+1.4 0	8.7	7.5	49.9					
(33)	33.5		9.5	8.2	54.7					
36	36.5		10.2	9	59.1					
(39)	39.5		10.7	9.5	63.1					

Square Washer

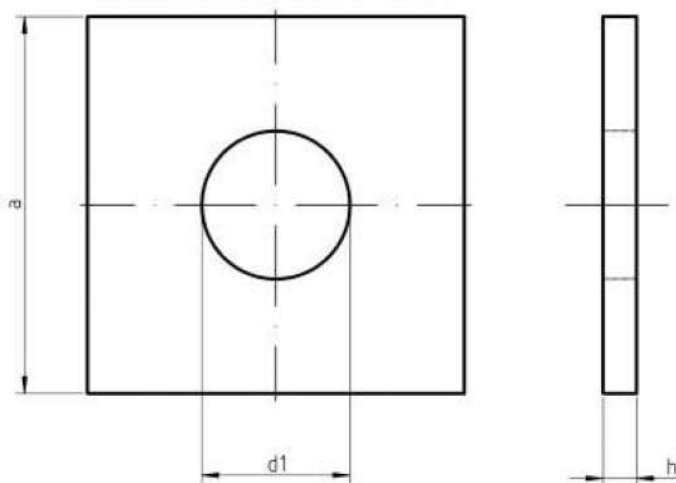


1 Rolled-in grooves for indication of $(14 \pm 0.5) \%$ taper (on top side)

DIN 435 Dimensions of washers

Nominal size	For thread size	Hole diameter d		Width a			Length b			auxiliary dimension $e^{1), 2)}$	Thickness h			Radius r	Groove depth t
		nom.	max.	nom.	min.	max.	nom.	min.	max.		nom.	min.	max.		
9.0	M8	9	9.36	22	20	24	22	21.35	22.65	3.05	4.6	3.6	5.6	1.2	0.5
11.0	M10	11	11.43	22	20	24	22	21.35	22.65	3.05	4.6	3.6	5.6	1.2	0.5
13.5	M12	13.5	13.93	26	24	28	30	29.35	30.65	4.10	6.2	5.0	7.4	1.6	0.7
17.5	M16	17.5	17.93	32	29.5	34.5	36	35.20	36.80	5.00	7.5	6.3	8.7	2.0	0.8
22.0	M20	22	22.52	40	37.5	42.5	44	43.20	44.80	6.10	9.2	8.0	10.4	2.4	0.9
24.0	M22	24	24.52	44	41.5	46.5	50	49.20	50.80	6.50	10.0	8.8	11.2	2.4	1.0
26.0	M24	26	26.52	56	53	59	56	55.05	56.95	6.90	10.8	9.3	12.3	2.4	1.0
30.0	M27	30	30.52	56	53	59	56	55.05	56.95	6.90	10.8	9.3	12.3	2.4	1.0

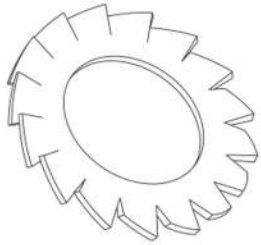
Continue....



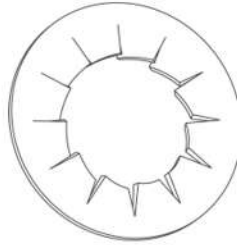
Dimensions of Metric DIN 436

Nominal size	thread size	d1		a		h		
		min.	max.	max.	min.	Nominal	max.	min.
11	M10	11	11.4	30	28.7	3	3.6	2.4
13.5	M12	13.5	13.9	40	38.4	4	4.6	3.4
17.5	M16	17.5	18.2	50	48.4	5	6	4
22	M20	22	22.8	60	58.1	5	6	4
24	M22	24	24.8	70	68.1	6	7	5
26	M24	26	26.8	80	78.1	6	7	5
30	M27	30	30.8	90	87.8	6	7	5
33	M30	33	34	95	92.8	6	7	5
36	M33	36	37	100	97.8	6	7	5
39	M36	39	40	110	108	8	9.2	6.8
42	M39	42	43	125	123	8	9.2	6.8
45	M42	45	46	135	133	8	9.2	6.8
48	M45	48	49	140	138	8	9.2	6.8
52	M48	52	53.2	150	148	10	11.2	8.8
56	M52	56	27.2	160	158	10	11.2	8.8

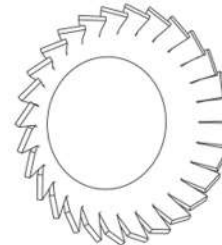
Toothed Lock Washer



DIN 6798 A



DIN 6798 J

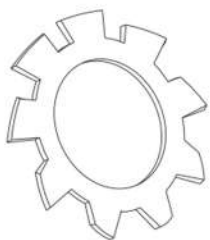


DIN 6798 V

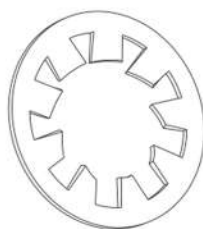
DIN 6798 A/J				
Screw size	Internal diameter min.-max.	External diameter min.-max.	Thickness min.-max.	Number of teeth
M 2.0	2.20-2.34	4.20-4.50	0.27-0.33	9
M 2.3	2.50-2.64	4.70-5.00	0.36-0.44	9
M 2.5	2.70-2.84	5.20-5.50	0.36-0.44	9
M 3.0	3.20-3.38	5.70-6.00	0.36-0.44	9
M 3.5	3.70-3.88	6.64-7.00	0.46-0.54	10
M 4.0	4.30-4.48	7.64-8.00	0.46-0.54	11
M 5.0	5.10-5.28	8.64-9.00	0.46-0.54	11
M 5.0	5.30-5.48	9.64-10.00	0.55-0.65	11
M 6.0	6.40-6.62	10.57-11.00	0.65-0.75	12
M 7.0	7.40-7.62	12.07-12.50	0.75-0.85	14
M 8.0	8.20-8.42	13.57-14.00	0.75-0.85	14
M 8.0	8.40-8.62	14.57-15.00	0.75-0.85	14
M 10.0	10.50-10.77	17.57-18.00	0.85-0.95	16
M 12.0	13.00-13.27	19.98-20.50	0.94-1.06	16
M 14.0	15.00-15.27	23.48-24.00	0.94-1.06	18
M 16.0	17.00-17.27	25.48-26.00	1.14-1.26	18
M 18.0	19.00-19.33	29.48-30.00	1.34-1.46	18
M 20.0	21.00-21.33	32.38-33.00	1.34-1.46	20
M 22.0	23.00-23.33	35.38-36.00	1.42-1.58	20
M 24.0	25.00-25.33	37.38-38.00	1.42-1.58	20
M 27.0	28.00-28.33	43.38-44.00	1.52-1.68	22
M 30.0	31.00-31.39	47.38-48.00	1.52-1.68	22

Dimensions in mm.

Continue....



DIN 6797 A



DIN 6797 J

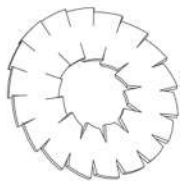


DIN 6797 V

Carbon Steel

DIN 6797 A/J				
Screw size	Internal diameter min.-max.	External diameter min.-max.	Thickness min.-max.	Number of teeth
M 2.0	2.20-2.34	4.20-4.50	0.27-0.33	6
M 2.3	2.50-2.64	4.70-5.00	0.36-0.44	6
M 2.5	2.70-2.84	5.20-5.50	0.36-0.44	6
M 3.0	3.20-3.38	5.70-6.00	0.36-0.44	6
M 3.5	3.70-3.88	6.64-7.00	0.46-0.54	6
M 4.0	4.30-4.48	7.64-8.00	0.46-0.54	8
M 5.0	5.10-5.28	8.64-9.00	0.46-0.54	8
M 5.0	5.30-5.48	9.64-10.00	0.55-0.65	8
M 6.0	6.40-6.62	10.57-11.00	0.65-0.75	8
M 7.0	7.40-7.62	12.07-12.50	0.75-0.85	8
M 8.0	8.20-8.42	13.57-14.00	0.75-0.85	8
M 8.0	8.40-8.62	14.57-15.00	0.75-0.85	8
M 10.0	10.50-10.77	17.57-18.00	0.85-0.95	9
M 12.0	13.00-13.27	19.98-20.50	0.94-1.06	10
M 14.0	15.00-15.27	23.48-24.00	0.94-1.06	10
M 16.0	17.00-17.27	25.48-26.00	1.14-1.26	12
M 18.0	19.00-19.33	29.48-30.00	1.34-1.46	12
M 20.0	21.00-21.33	32.38-33.00	1.34-1.46	12
M 22.0	23.00-23.33	35.38-36.00	1.42-1.58	14
M 24.0	25.00-25.33	37.38-38.00	1.42-1.58	14
M 27.0	28.00-28.33	43.38-44.00	1.52-1.68	14
M 30.0	31.00-31.39	47.38-48.00	1.52-1.68	14

Dimensions in mm.



With double teeth



ASME B 18.21.1 - external teeth



ASME B 18.21.1 - internal teeth

Dimensions in mm.

ASME B 18.21.1 - EXTERNAL TEETH

Screw size	Internal diameter min.-max.	External diameter min.-max.	Thickness min.-max.	Number of teeth
N.10	4.95-5.18	10.03-10.31	0.45-0.61	8
1/4"	6.50-6.73	12.54-12.85	0.59-0.71	10
5/16"	8.12-8.43	14.93-15.26	0.71-0.86	8
3/8"	9.75-10.05	17.27-17.62	0.81-1.01	12
7/16"	11.37-11.70	18.90-19.30	0.81-1.01	12
1/2"	13.03-13.43	22.35-22.80	0.94-1.14	12
1"	26.03-26.92	40.39-41.15	1.50-1.70	14

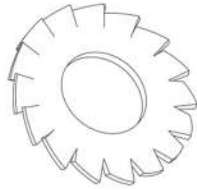
ASME B 18.21.1 - INTERNAL TEETH

Screw size	Internal diameter min.-max.	External diameter min.-max.	Thickness min.-max.	Number of teeth
N.10	4.95-5.18	9.37-9.67	0.45-0.61	8
1/4"	6.50-6.78	11.83-12.14	0.59-0.71	8
5/16"	8.12-8.43	15.08-15.41	0.71-0.86	8
3/8"	9.75-10.05	17.20-17.57	0.81-1.01	10
7/16"	11.37-11.70	19.58-20.04	0.81-1.01	10
1/2"	13.00-13.43	22.02-22.42	0.94-1.14	10
1"	25.88-26.49	40.97-41.57	1.50-1.70	14

WITH DOUBLE TEETH

Screw size	Internal diameter min.-max.	External diameter min.-max.	Thickness min.-max.	Height min.-max.	Number of internal teeth	Number of external teeth
M 4	4.20-4.38	15.17-15.60	0.77-0.83	2.00-2.80	7	16
M 5	5.10-5.28	17.47-17.90	0.77-0.83	2.00-2.80	7	16
M 6	6.10-6.32	17.70-18.20	0.87-0.93	2.25-3.15	8	16
M 8	8.20-8.42	21.73-22.25	0.96-1.04	2.50-3.50	10	16
M 10	10.20-10.47	25.58-26.10	1.06-1.14	2.60-3.85	12	18
M 12	12.50-12.77	29.78-30.30	1.16-1.24	3.00-4.20	12	18
M 16	16.30-16.73	35.48-36.10	1.36-1.44	3.50-4.90	12	20

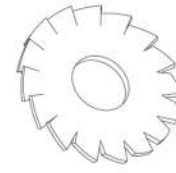
Continue....



DIN 6907



DIN 6906



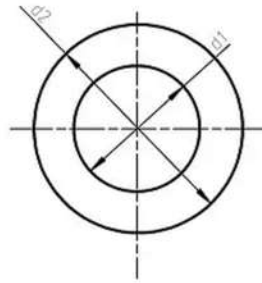
For self-tapping screws

DIN 6907				
Screw size	Internal diameter min.-max.	External diameter min.-max.	Thickness min.-max.	Number of teeth
M 2.5	2.25-2.35	5.32-5.50	0.36-0.44	9
M 3.0	2.70-2.80	5.82-6.00	0.36-0.44	9
M 3.5	3.20-3.32	6.78-7.00	0.46-0.54	10
M 4.0	3.60-3.72	7.78-8.00	0.46-0.54	11
M 5.0	4.55-4.67	8.78-9.00	0.55-0.65	11
M 6.0	5.50-5.62	10.73-11.00	0.65-0.75	12
M 8.0	7.40-7.55	13.73-14.00	0.75-0.85	14

DIN 6906				
Screw size	Internal diameter min.-max.	External diameter min.-max.	Thickness min.-max.	Number of teeth
M 2.5	2.25-2.35	5.32-5.50	0.36-0.44	6
M 3.0	2.70-2.80	5.82-6.00	0.36-0.44	6
M 3.5	3.20-3.32	6.78-7.00	0.46-0.54	6
M 4.0	3.60-3.72	7.78-8.00	0.46-0.54	8
M 5.0	4.55-4.67	8.78-9.00	0.55-0.65	8
M 6.0	5.50-5.57	10.73-11.00	0.65-0.75	8
M 8.0	7.40-7.55	13.73-14.00	0.75-0.85	8

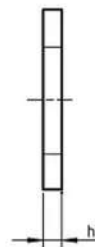
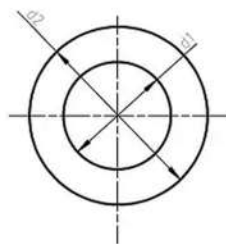
FOR SELF-TAPPING SCREWS				
Screw size	Internal diameter min.-max.	External diameter min.-max.	Thickness min.-max.	Height min.-max.
M 3.5	3.04-3.09	8.90-9.10	0.55-0.65	1.43-1.57
M 3.9	3.35-3.40	8.90-9.10	0.55-0.65	1.43-1.57
M 4.2	3.60-3.65	8.90-9.10	0.55-0.65	1.43-1.57
M 4.2	3.60-3.67	7.78-8.00	0.46-0.54	1.23-1.37
M 4.8	4.07-4.13	10.90-11.10	0.75-0.85	1.90-2.10
M 5.5	4.53-4.59	10.90-11.10	0.75-0.85	1.90-2.10
M 6.3	5.37-5.42	10.90-11.10	0.75-0.85	1.90-2.10
M 6.3	5.37-5.42	12.40-12.60	0.75-0.85	1.90-2.10

Plain Washer

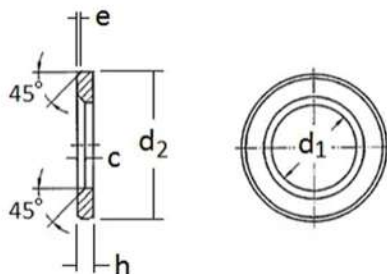


SIZE	FOR THREAD	D1 MIN.	D1 MAX.	D2 MIN.	D2 MAX.	H MIN.	H MAX.
1,7	M1,6	1,7	1,84	3,7	4	0,25	0,35
1,8	M1,7	1,8	1,94	4,2	4,5	0,25	0,35
2,2	M2	2,2	2,34	4,7	5	0,25	0,35
2,5	M2,3	2,5	2,64	5,7	6	0,45	0,55
2,7	M2,5	2,7	2,84	5,7	6	0,45	0,55
2,8	M2,6	2,8	2,94	6,64	7	0,45	0,55
3,2	M3	3,2	3,38	6,64	7	0,45	0,55
3,7	M3,5	3,7	3,88	7,64	8	0,45	0,55
4,3	M4	4,3	4,48	8,64	9	0,7	0,9
5,3	M5	5,3	5,48	9,64	10	0,9	1,1
6,4	M6	6,4	6,62	11,57	12	1,4	1,8
7,4	M7	7,4	7,62	13,57	14	1,4	1,8
8,4	M8	8,4	8,62	15,57	16	1,4	1,8
10,5	M10	10,5	10,77	19,48	20	1,8	2,2
13	M12	13	13,27	23,48	24	2,3	2,7
15	M14	15	15,27	27,48	28	2,3	2,7
17	M16	17	17,27	29,48	30	2,7	3,3
19	M18	19	19,33	33,38	34	2,7	3,3
21	M20	21	21,33	36,38	37	2,7	3,3
23	M22	23	23,33	38,38	39	2,7	3,3
25	M24	25	25,33	43,38	44	3,7	4,3

Continue....



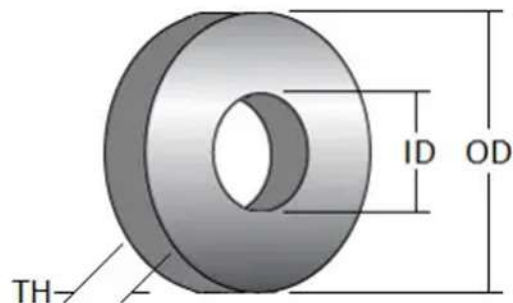
SIZE	FOR THREAD	D1 MIN.	D1 MAX.	D2 MIN.	D2 MAX.	H MIN.	H MAX.
27	M26	27	27,33	49,38	50	3,7	4,3
28	M27	28	28,33	49,38	50	3,7	4,3
29	M28	29	29,33	49,38	50	3,7	4,3
31	M30	31	31,39	55,26	56	3,7	4,3
33	M32	33	33,62	58,8	60	4,4	5,6
34	M33	34	34,62	58,8	60	4,4	5,6
36	M35	36	36,62	64,8	66	4,4	5,6
37	M36	37	37,62	64,8	66	4,4	5,6



DIN EN 14399 - PLAIN WASHER

SIZE	D1		D2		H		C		E	
	Hole Diameter		External Diameter		Thickness		Hole Thickness		Chamfer Depth	
	Min. = Nominal Size	Max.	Max. = Nominal Size	Min.	Max.	Min.	Max.	Min.	Max.	Min.
M12	13	13.27	24	23.48	3.3	2.7	1.9	1.6	1.0	0.5
M14	15	15.27	28	27.48	3.3	2.7	1.9	1.6	1.0	0.5
M16	17	17.27	30	29.48	4.3	3.7	1.9	1.6	1.5	0.75
M20	21	21.33	37	36.38	4.3	3.7	2.5	2.0	1.5	0.75
M22	23	23.33	39	38.38	4.3	3.7	2.5	2.0	1.5	0.75
M24	25	25.33	44	43.38	4.3	3.7	2.5	2.0	1.5	0.75
M27	28	28.52	50	49.00	5.6	4.4	3.0	2.5	2.0	1.0
M30	31	31.62	56	54.8	5.6	4.4	3.0	2.5	2.0	1.0
M36	37	37.62	66	64.8	6.6	5.4	3.0	2.5	2.5	1.25

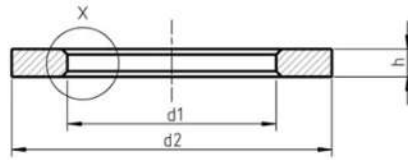
Continue....



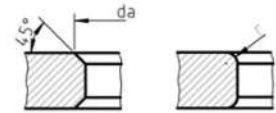
FLAT WASHER, ASTM F436/F436M, STRUCTURAL, THRU-HARDENED, EXTRA THICK, YELLOW ZINC

SIZE	ID		OD		TH	
	Min.	Max.	Min.	Max.	Min.	Max.
1/4	0.281	0.313	0.593	0.657	.090	.110
5/16	0.344	0.376	0.656	0.720	.090	.110
3/8	0.406	0.438	0.781	0.845	0.110	.126
7/16	0.469	0.501	0.890	0.954	0.110	.126
1/2	0.531	0.563	1.031	1.095	0.305	.375
9/16	0.625	0.657	1.156	1.22	0.305	.375
5/8	0.688	0.720	1.281	1.345	0.305	.375
3/4	0.813	0.845	1.436	1.500	0.305	.375
7/8	0.938	0.970	1.718	1.782	0.305	.375
1	1.063	1.126	1.937	2.063	0.305	.375
1-1/8	1.188	1.251	2.187	2.313	0.305	.375
1-1/4	1.375	1.438	2.437	2.563	0.305	.375
1-1/2	1.625	1.688	2.937	3.063	0.305	.375

Continue....



Detail X
Chamfer or radius, at the manufacturer's discretion.



UNI 6592 - WASHERS FOR CHEESE HEAD SCREWS

NOMINAL SIZE	FOR THREAD	D1 MIN.	D1 MAX.	D2 MAX.	D2 MIN.	H NOMINAL SIZE	H MAX.	H MIN.	WEIGHT KG/1000PCS
1,1	M1	1,1	1,24	2,5	2,25	0,3	0,35	0,25	0,01
1,3	M1,2	1,3	1,44	3	2,75	0,3	0,35	0,25	0,014
1,5	M1,4	1,5	1,64	3	2,75	0,3	0,35	0,25	0,012
1,7	M1,6	1,7	1,84	3,5	3,2	0,3	0,35	0,25	0,017
2	M1,8	2	2,14	4	3,7	0,3	0,35	0,25	0,022
2,2	M2	2,2	2,34	4,5	4,2	0,3	0,35	0,25	0,029
2,7	M2,5	2,7	2,64	5	4,7	0,5	0,55	0,45	0,065
3,2	M3	3,2	3,38	6	5,7	0,5	0,55	0,45	0,079
3,7	M3,5	3,7	3,88	7	6,64	0,5	0,55	0,45	0,109
4,3	M4	4,3	4,48	8	7,64	0,5	0,55	0,45	0,14
5,3	M5	5,3	5,48	9	8,64	1	1,1	0,9	0,32
6,4	M6	6,4	6,62	11	10,57	1,6	1,8	1,4	0,79
8,4	M8	8,4	8,62	15	14,57	1,6	1,8	1,4	1,52
10,5	M10	10,5	10,77	18	17,57	1,6	1,8	1,4	2,11
13	M12	13	13,27	20	19,48	2	2,2	1,8	2,65
15	M14	15	15,27	24	23,48	2,5	2,7	2,3	5,41
17	M16	17	17,27	28	27,48	2,5	2,7	2,3	7,63
19	M18	19	19,33	30	29,48	2,5	2,7	2,3	8,31
21	M20	21	21,33	34	33,38	3	3,3	2,7	13,2
25	M24	25	25,33	39	39,38	4	4,3	3,7	22,1
31	M30	31	31,39	50	49,38	4	4,3	3,7	38
37	M36	37	37,62	58	56,8	5	5,6	4,4	61,5

DEDICATED IMPEX CO.

D - 189, Industrial Focal Point, Patiala
147003 Punjab, India
info@dicfasteners.com
+91-95922-28222

DICFASTENERS

A Brand by Dedicated Impex Co.