

DiCFASTENERS

A Brand by Dedicated Impex Co.



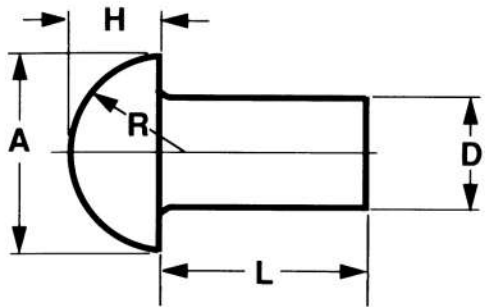
RIVETS

Product Name	Page No.
Solid Small Rivets.....	03-04
Solid Large Rivets.....	05 -06
Semi-Tubular Rivets	07
Blind Rivets	08 -12
Countersunk Blind Rivets.....	13 -20
Semi-Structural Blind Rivets.....	21 - 22
Structural Blind Rivets	23 - 34



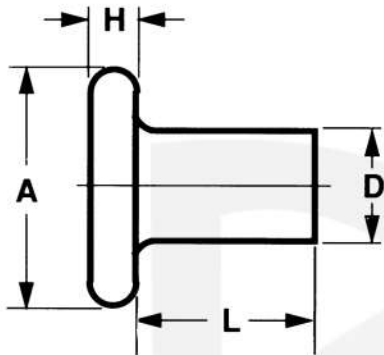
SOLID SMALL RIVETS

ROUND HEAD RIVETS

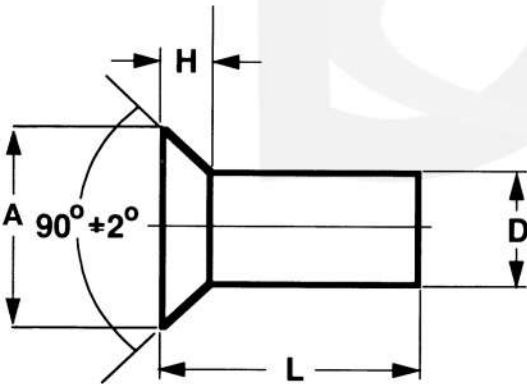


Nominal Size or Basic Shank Diameter	D		A		H		R	
	Shank Diameter		Head Diameter		Head Height		Head Radius	
	Max	Min	Max	Min	Max	Min	Approx	
1/16	0.062	0.064	0.059	0.122	0.102	0.052	0.042	0.055
3/32	0.094	0.096	0.090	0.182	0.162	0.077	0.065	0.084
1/8	0.125	0.127	0.121	0.235	0.215	0.100	0.088	0.111
5/32	0.156	0.158	0.152	0.290	0.268	0.124	0.110	0.138
3/16	0.188	0.191	0.182	0.348	0.322	0.147	0.133	0.166
7/32	0.219	0.222	0.213	0.405	0.379	0.172	0.158	0.195
1/4	0.250	0.253	0.244	0.460	0.430	0.196	0.180	0.221
9/32	0.281	0.285	0.273	0.518	0.484	0.220	0.202	0.249
5/16	0.312	0.316	0.304	0.572	0.538	0.243	0.225	0.276
11/32	0.344	0.348	0.336	0.630	0.592	0.267	0.247	0.304
3/8	0.375	0.380	0.365	0.684	0.646	0.291	0.271	0.332
13/32	0.406	0.411	0.396	0.743	0.699	0.316	0.294	0.358
7/16	0.438	0.443	0.428	0.798	0.754	0.339	0.317	0.387

FLAT HEAD RIVETS



Nominal Size or Basic Shank Diameter	D		A		H		
	Shank Diameter		Head Diameter		Head Height		
	Max	Min	Max	Min	Max	Min	
1/16	0.062	0.064	0.059	0.140	0.120	0.027	0.017
3/32	0.094	0.096	0.090	0.200	0.180	0.038	0.026
1/8	0.125	0.127	0.121	0.260	0.240	0.048	0.036
5/32	0.156	0.158	0.152	0.323	0.301	0.059	0.045
3/16	0.188	0.191	0.182	0.387	0.361	0.069	0.055
7/32	0.219	0.222	0.213	0.453	0.427	0.080	0.065
1/4	0.250	0.253	0.244	0.515	0.485	0.091	0.075
9/32	0.281	0.285	0.273	0.579	0.545	0.103	0.085
5/16	0.312	0.316	0.304	0.641	0.607	0.113	0.095
11/32	0.344	0.348	0.336	0.705	0.667	0.124	0.104
3/8	0.375	0.380	0.365	0.769	0.731	0.135	0.115
13/32	0.406	0.411	0.396	0.834	0.790	0.146	0.124
7/16	0.438	0.443	0.428	0.896	0.852	0.157	0.135

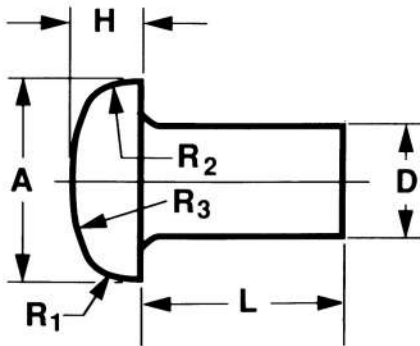


COUNTERSUNK HEAD RIVETS

Nominal Size or Basic Shank Diameter	D		A		H	
	Shank Diameter		Head Diameter		Head Height	
	Max	Min	Max	Min	Ref	
1/16	0.062	0.064	0.059	0.118	0.110	0.027
3/32	0.094	0.096	0.090	0.176	0.163	0.040
1/8	0.125	0.127	0.121	0.235	0.217	0.053
5/32	0.156	0.158	0.152	0.293	0.272	0.066
3/16	0.188	0.191	0.182	0.351	0.326	0.079
7/32	0.219	0.222	0.213	0.413	0.384	0.094
1/4	0.250	0.253	0.244	0.469	0.437	0.106
9/32	0.281	0.285	0.273	0.528	0.491	0.119
5/16	0.312	0.316	0.304	0.588	0.547	0.133
11/32	0.344	0.348	0.336	0.646	0.602	0.146
3/8	0.375	0.380	0.365	0.704	0.656	0.159
13/32	0.406	0.411	0.396	0.763	0.710	0.172
7/16	0.438	0.443	0.428	0.823	0.765	0.186

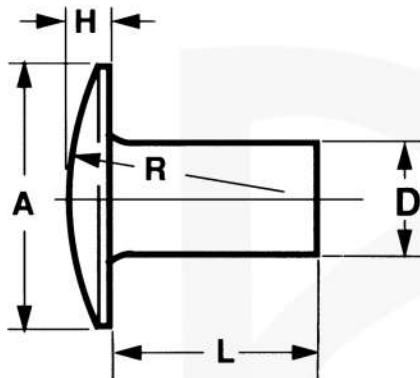
Continue...

PAN HEAD RIVETS



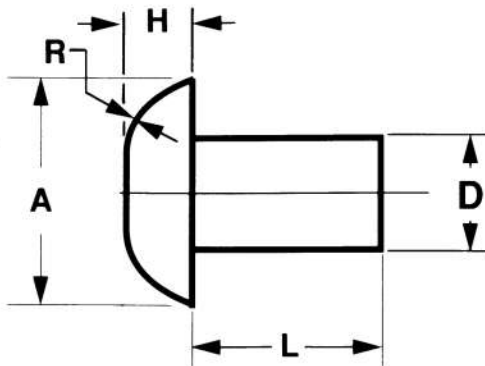
Nominal Size or Basic Shank Diameter	D		A		H		R ₁	R ₂	R ₃	
	Shank Diameter		Head Diameter		Head Height		Head Radius			
	Max	Min	Max	Min	Max	Min	Approx			
1/16	0.062	0.064	0.059	0.118	0.098	0.040	0.030	0.019	0.052	0.217
3/32	0.094	0.096	0.090	0.173	0.153	0.060	0.048	0.030	0.080	0.326
1/8	0.125	0.127	0.121	0.225	0.205	0.078	0.066	0.039	0.106	0.429
5/32	0.156	0.158	0.152	0.279	0.257	0.096	0.082	0.049	0.133	0.535
3/16	0.188	0.191	0.182	0.334	0.308	0.114	0.100	0.059	0.159	0.641
7/32	0.219	0.222	0.213	0.391	0.365	0.133	0.119	0.069	0.186	0.754
1/4	0.250	0.253	0.244	0.444	0.414	0.151	0.135	0.079	0.213	0.858
9/32	0.281	0.285	0.273	0.499	0.465	0.170	0.152	0.088	0.239	0.963
5/16	0.312	0.316	0.304	0.552	0.518	0.187	0.169	0.098	0.266	1.070
11/32	0.344	0.348	0.336	0.608	0.570	0.206	0.186	0.108	0.292	1.176
3/8	0.375	0.380	0.365	0.663	0.625	0.225	0.205	0.118	0.319	1.286
13/32	0.406	0.411	0.396	0.719	0.675	0.243	0.221	0.127	0.345	1.392
7/16	0.438	0.443	0.428	0.772	0.728	0.261	0.239	0.137	0.372	1.500

TRUSS HEAD RIVETS



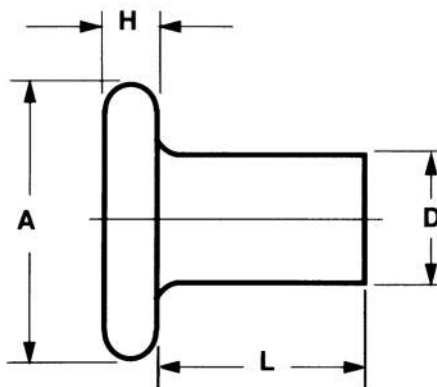
Nominal Size or Basic Shank Diameter	D		A		H		R		
	Shank Diameter		Head Diameter		Head Height		Head Radius		
	Max	Min	Max	Min	Max	Min	Approx		
3/32	0.094	0.096	0.090	0.226	0.206	0.038	0.026	0.239	
1/8	0.125	0.127	0.121	0.297	0.277	0.048	0.036	0.314	
5/32	0.156	0.158	0.152	0.368	0.348	0.059	0.045	0.392	
3/16	0.188	0.191	0.182	0.442	0.422	0.069	0.055	0.470	
7/32	0.219	0.222	0.213	0.515	0.495	0.080	0.066	0.555	
1/4	0.250	0.253	0.244	0.590	0.560	0.091	0.075	0.628	
9/32	0.281	0.285	0.273	0.661	0.631	0.103	0.085	0.706	
5/16	0.312	0.316	0.304	0.732	0.702	0.113	0.095	0.784	
11/32	0.344	0.348	0.336	0.806	0.776	0.124	0.104	0.862	
3/8	0.375	0.380	0.365	0.878	0.848	0.135	0.115	0.942	
13/32	0.406	0.411	0.396	0.949	0.919	0.145	0.123	1.028	
7/16	0.438	0.443	0.428	1.020	0.990	0.157	0.135	1.098	

UNIVERSAL HEAD RIVETS



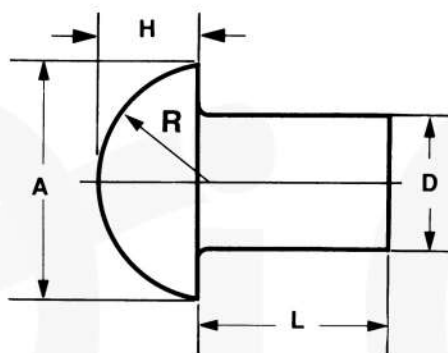
Nominal Size or Basic Shank Diameter	D		A		H		R		
	Shank Diameter		Head Diameter		Head Height		Head Radius		
	Max	Min	Max	Min	Max	Min	Approx		
1/16	.062	0.064	0.059	0.135	0.115	0.037	0.027	0.054	
3/32	.093	0.096	0.090	0.197	0.177	0.051	0.039	0.082	
1/8	.125	0.127	0.121	0.260	0.240	0.065	0.053	0.108	
5/32	.156	0.158	0.152	0.323	0.301	0.079	0.065	0.135	
3/16	.187	0.191	0.182	0.387	0.361	0.092	0.078	0.164	
1/4	.250	0.253	0.244	0.515	0.485	0.120	0.104	0.217	
5/16	.312	0.316	0.304	0.641	0.607	0.147	0.129	0.272	
3/8	.375	0.380	0.365	0.769	0.731	0.176	0.156	0.328	

SOLID LARGE RIVETS



FLAT HEAD RIVETS

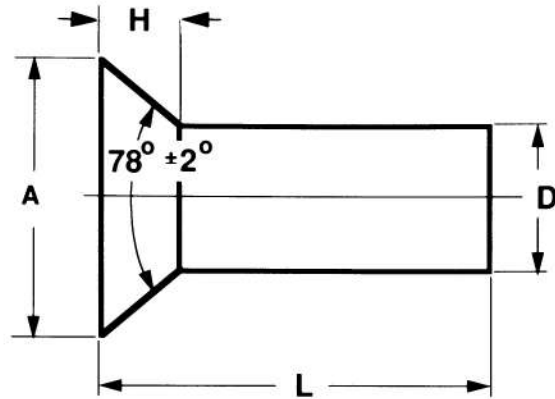
Nominal		Diameter of Body D		Diameter of Head A			Height of Head H	
		Max.	Min	Basic	Max	Min	Max	Min
1/2	0.500	0.520	0.478	0.875	0.938	0.844	0.281	0.250
5/8	0.625	0.655	0.600	1.094	1.157	1.063	0.344	0.313
3/4	0.750	0.780	0.725	1.312	1.390	1.281	0.406	0.375
7/8	0.875	0.905	0.850	1.531	1.609	1.500	0.469	0.438
1	1.000	1.030	0.975	1.750	1.828	1.719	0.531	0.500
1-1/8	1.125	1.160	1.098	1.969	2.063	1.938	0.610	0.563
1-1/4	1.250	1.285	1.223	2.188	2.282	2.157	0.672	0.625
1-3/8	1.375	1.415	1.345	2.406	2.500	2.375	0.735	0.688



ROUND HEAD RIVETS

D		A			H		R		
Shank Diameter		Head Diameter			Head Height		Head		
Nominal Size	Max	Min	Basic	Max	Min	Max	Min (Basic)	Radius	
1/2	0.500	0.520	0.478	0.875	0.938	0.844	0.406	0.375	0.443
5/8	0.625	0.655	0.600	1.094	1.157	1.063	0.500	0.469	0.553
3/4	0.750	0.780	0.725	1.312	1.390	1.281	0.593	0.562	0.664
7/8	0.875	0.905	0.850	1.531	1.609	1.500	0.687	0.656	0.775
1	1.000	1.030	0.975	1.750	1.828	1.719	0.781	0.750	0.885
1-1/8	1.125	1.160	1.098	1.969	2.063	1.938	0.891	0.844	0.996
1-1/4	1.250	1.285	1.223	2.188	2.282	2.157	0.985	0.938	1.107
1-3/8	1.375	1.415	1.345	2.406	2.500	2.375	1.078	1.031	1.217
1-1/2	1.500	1.540	1.470	2.625	2.719	2.594	1.188	1.125	1.328
1-5/8	1.625	1.665	1.588	2.844	2.938	2.813	1.282	1.219	1.439
1-3/4	1.750	1.790	1.713	3.062	3.171	3.031	1.375	1.312	1.549

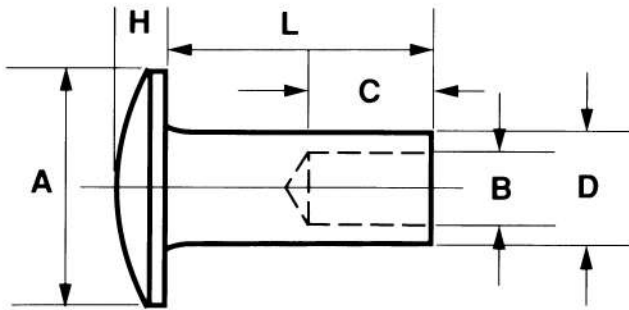
Continue....



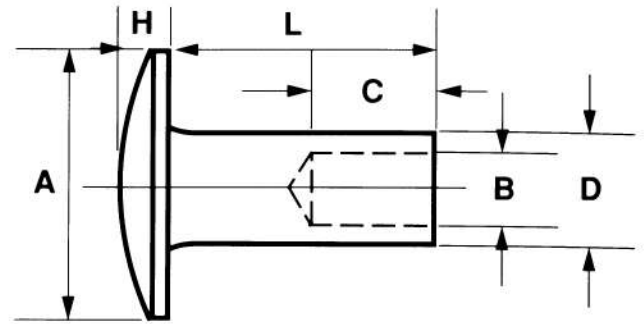
COUNTERSUNK HEAD RIVETS

Nominal Size of Basic Shank Diameter	D Shank Diameter		A Head Diameter		H Head Height	
	Max	Min	Max	Min	Ref	
	1/2	0.500	0.520	0.478	0.936	0.872
5/8	0.625	0.655	0.600	1.194	1.112	0.339
3/4	0.750	0.780	0.725	1.421	1.322	0.400
7/8	0.875	0.905	0.850	1.647	1.532	0.460
1	1.000	1.030	0.975	1.873	1.745	0.520
1-1/8	1.125	1.160	1.098	2.114	1.973	0.589
1-1/4	1.250	1.285	1.223	2.340	2.199	0.650
1-3/8	1.375	1.415	1.345	2.567	2.426	0.710
1-1/2	1.500	1.540	1.470	2.793	2.652	0.771
1-5/8	1.625	1.665	1.588	3.019	2.878	0.831
1-3/4	1.750	1.790	1.713	3.262	3.121	0.901

SEMI-TUBULAR RIVETS



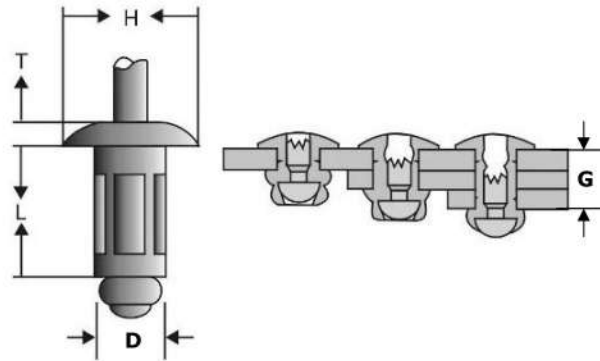
OVAL HEAD STRAIGHT HOLE



TRUSS HEAD STRAIGHT HOLE

Nominal Shank Diameter	Shank Diameter D		Head Style	Head Diameter A		Head Thickness H		Hole Diameter B		Hole Depth C	Suggested Clinch Allowance	Hole Dia. in Assembly
	Min.	Max.		Basic	Tol.	Basic	Tol.	Min.	Max.			
1/16	.058	.061	Oval	.109	± .005	.017	± .002	.039	.044	0.046	0.040	0.067
1/16	.058	.061	Truss	.125	± .005	.017	± .002	.039	.044	0.046	0.040	0.067
3/32	.085	.089	Oval	.147	± .005	.023	± .003	.062	.068	0.064	0.045	0.093
3/32	.085	.089	Truss	.187	± .005	.023	± .003	.062	.068	0.064	0.045	0.093
3/32	.095	.099	Oval	.156	± .005	.023	± .003	.070	.076	0.077	0.050	0.100
3/32	.095	.099	Truss	.187	± .005	.029	± .003	.070	.076	0.077	0.050	0.100
1/8	.118	.123	Oval	.218	± .005	.034	± .004	.084	.090	0.094	0.075	0.128
1/8	.118	.123	Truss	.281	± .005	.034	± .004	.084	.090	0.094	0.075	0.128
9/64	.141	.146	Oval	.234	± .005	.040	± .005	.100	.107	0.126	0.092	0.152
9/64	.141	.146	Truss	.312	± .006	.040	± .005	.100	.107	0.126	0.092	0.152
5/32	.151	.156	Oval	.312	± .006	.046	± .005	.110	.117	0.155	0.096	0.165
5/32	.151	.156	Truss	.328	± .006	.046	± .005	.110	.117	0.155	0.096	0.165
3/16	.182	.188	Oval	.312	± .006	.060	± .005	.134	.141	0.155	0.120	0.196
3/16	.182	.188	Truss	.375	± .006	.060	± .005	.134	.141	0.155	0.120	0.196
7/32	.213	.220	Oval	.375	± .006	.063	± .005	.158	.165	0.187	0.137	0.228
7/32	.213	.220	Truss	.437	± .006	.080	± .005	.158	.165	0.187	0.137	0.228
1/4	.244	.252	Oval	.437	± .007	.068	± .007	.176	.184	0.219	0.157	0.265
1/4	.244	.252	Truss	.500	± .007	.078	± .007	.176	.184	0.219	0.157	0.265
9/32	.281	.289	Oval	.437	± .007	.068	± .007	.187	.195	0.219	0.172	0.297
9/32	.281	.289	Truss	.500	± .007	.078	± .007	.187	.195	0.219	0.172	0.297
5/16	.302	.310	Oval	.500	± .008	.093	± .007	.211	.219	0.243	0.188	0.328
5/16	.302	.310	Truss	.562	± .008	.093	± .007	.211	.219	0.243	0.188	0.328
3/8	.370	.380	Oval	.500	± .008	.125	± .007	.276	.286	0.281	0.219	0.390
3/8	.370	.380	Truss	.750	± .010	.156	± .007	.276	.286	0.281	0.219	0.390
7/16	.437	.442	Oval								0.250	0.443
7/16	.437	.442	Truss								0.250	0.443
1/2	.478	.520	Oval								0.281	0.516
1/2	.478	.520	Truss								0.281	0.516

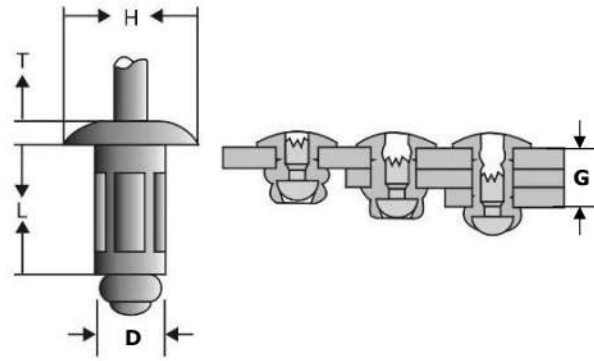
BLIND RIVETS



Multi-Grip Type, Aluminum Alloy Rivets With Aluminum Mandrels

RIVET DIAMETER D	HOLE SIZE (mm)	RIVET LENGTH L (+/- 0.3)	GRIP RANGE G	HEAD DIAMETER H (nom.)	HEAD THICKNESS S T (max.)	STANDARD STRENGTH N. (nom.)	
						SHEAR	TENSILE
1/8" 3.2mm	3.3~3.4	8.2	1.0-4.8mm	0.252 6.4mm	0.040 1.02mm	535	670
		9.9	1.6-6.4mm				
		11.4	3.2-8.0mm				
		13.0	4.8-9.6mm				
		14.6	6.4-11.2mm				
		16.2	8.0-12.7mm				
5/32" 4.0mm	4.1~4.2	8.9	1.2-4.8mm	0.311 7.9mm	0.050 1.27mm	845	1025
		10.5	1.6-6.4mm				
		12.0	3.2-8.0mm				
		13.6	4.8-9.6mm				
		15.2	6.4-11.2mm				
		16.8	8.0-12.7mm				
		18.4	9.6-14.3mm				
20.0	11.2-16.0mm						
3/16" 4.8mm	4.9~5.0	11.1	1.6-6.4mm	0.375 9.5mm	0.060 1.52mm	1160	1425
		14.3	3.2-9.6mm				
		15.9	4.8-11.2mm				
		17.5	8.0-12.7mm				
		19.3	9.6-14.3mm				
		23.8	11.2-19.1mm				
		27.0	12.7-22.4mm				

Continue....

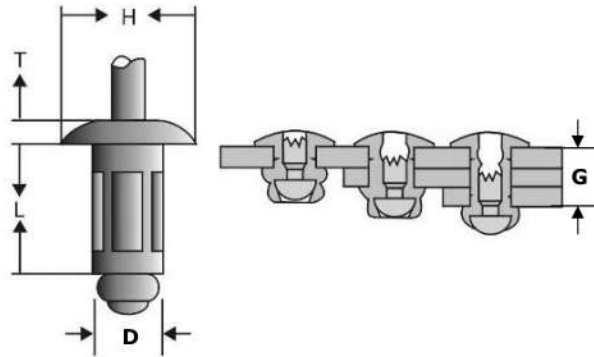


Multi-Grip Type, Aluminum Alloy Rivets With Steel Mandrels

RIVET DIAMETER D	HOLE SIZE (mm)	RIVET LENGTH L (+/- 0.3)	GRIP RANGE G	HEAD DIAMETER H (nom.)	HEAD THICKNES S T (max.)	STANDARD STRENGTH N. (nom.)	
						SHEAR	TENSILE
1/8" 3.2mm	3.3~3.4	8.2	1.0-4.8mm	0.252 6.4mm	0.040 1.02mm	700	1000
		9.9	1.6-6.4mm				
		11.4	3.2-8.0mm				
		13.0	4.8-9.6mm				
		14.6	6.4-11.2mm				
		16.2	8.0-12.7mm				
5/32" 4.0mm	4.1~4.2	8.9	1.2-4.8mm	0.311 7.9mm	0.050 1.27mm	1000	1600
		10.5	1.6-6.4mm				
		12.0	3.2-8.0mm				
		13.6	4.8-9.6mm				
		15.2	6.4-11.2mm				
		16.8	8.0-12.7mm				
		18.4	9.6-14.3mm				
		20.0	11.2-16.0mm				
3/16" 4.8mm	4.9~5.0	11.1	1.6-6.4mm	0.375 9.5mm	0.060 1.52mm	1300	2100
		14.3	3.2-9.6mm				
		15.9	4.8-11.2mm				
		17.5	8.0-12.7mm				
		19.3	9.6-14.3mm				
		23.8	11.2-19.1mm				
		27.0	12.7-22.4mm				
		30.2	16.0-25.4mm				



Continue....

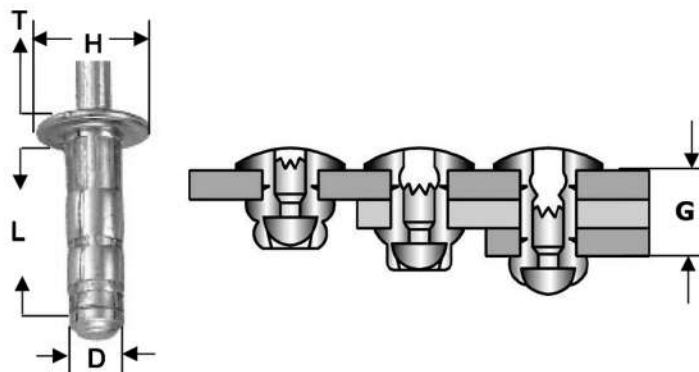


Multi-Grip Type, Aluminum Alloy Rivets With Stainless Steel Mandrels

RIVET DIAMETER D	HOLE SIZE (mm)	RIVET LENGTH L (+/- 0.3)	GRIP RANGE G	HEAD DIAMETER H (nom.)	HEAD THICKNES S T (max.)	STANDARD STRENGTH N.(nom.)	
						SHEAR	TENSILE
1/8" 3.2mm	3.3~3.4	8.2	1.0-4.8mm	0.252 6.4mm	0.040 1.02mm	700	1000
		9.9	1.6-6.4mm				
		11.4	3.2-8.0mm				
		13.0	4.8-9.6mm				
		14.6	6.4-11.2mm				
		16.2	8.0-12.7mm				
5/32" 4.0mm	4.1~4.2	8.9	1.2-4.8mm	0.311 7.9mm	0.050 1.27mm	1000	1600
		10.5	1.6-6.4mm				
		12.0	3.2-8.0mm				
		13.6	4.8-9.6mm				
		15.2	6.4-11.2mm				
		16.8	8.0-12.7mm				
		18.4	9.6-14.3mm				
		20.0	11.2-16.0mm				
3/16" 4.8mm	4.9~5.0	11.1	1.6-6.4mm	0.375 9.5mm	0.060 1.52mm	1300	2100
		14.3	3.2-9.6mm				
		15.9	4.8-11.2mm				
		17.5	8.0-12.7mm				
		19.3	9.6-14.3mm				
		23.8	11.2-19.1mm				
		27.0	12.7-22.4mm				



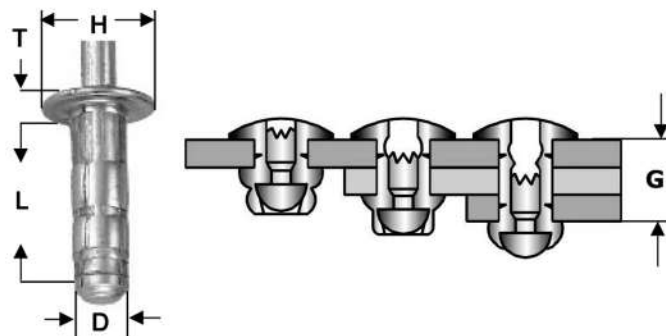
Continue....



Multi-Grip Type, Steel Rivets With Steel Mandrels

RIVET DIAMETER D	HOLE SIZE (mm)	RIVET LENGTH L (+/- 0.3)	GRIP RANGE G	HEAD DIAMETER H (nom.)	HEAD THICKNES S T (max.)	STANDARD STRENGTH N. (nom.)	
						SHEAR	TENSILE
1/8" 3.2mm	3.3~3.4	8.2	1.0-3.2mm	0.252 6.4mm	0.040 1.02mm	900	1200
		9.9	1.0-4.8mm				
		11.4	1.6-6.4mm				
		13.0	3.2-8.0mm				
		14.6	4.8-9.6mm				
		16.2	6.4-11.2mm				
5/32" 4.0mm	4.1~4.2	8.9	1.2-3.2mm	0.311 7.9mm	0.050 1.27mm	1500	1800
		10.5	1.6-4.8mm				
		12.0	1.6-6.4mm				
		13.6	3.2-8.0mm				
		15.2	4.8-9.6mm				
		16.8	6.4-11.2mm				
3/16" 4.8mm	4.9~5.0	9.5	1.6-3.2mm	0.375 9.5mm	0.060 1.52mm	2600	2900
		11.1	1.6-4.8mm				
		12.7	1.6-6.4mm				
		14.3	3.2-8.0mm				
		15.9	4.8-9.6mm				
		17.5	6.4-11.2mm				
		19.3	8.0-12.7mm				
		20.7	9.6-14.3mm				
23.8	12.7-17.5mm						

Continue....

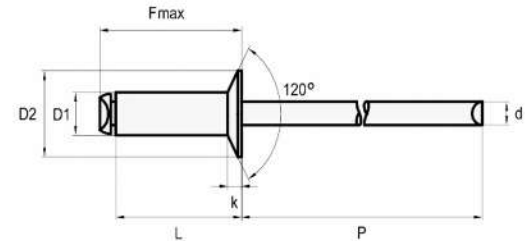
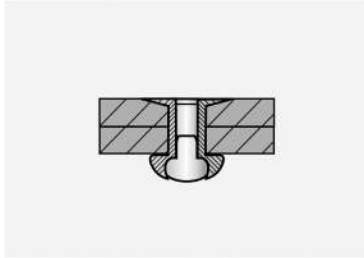


Multi-Grip Type, Stainless Steel Rivets With Stainless Steel Mandrels

RIVET DIAMETER D	HOLE SIZE (mm)	RIVET LENGTH L (+/- 0.3)	GRIP RANGE G	HEAD DIAMETER H (nom.)	HEAD THICKNES S T (max.)	STANDARD STRENGTH N.(nom.)	
						SHEAR	TENSILE
1/8" 3.2mm	3.3~3.4	8.2	1.0-3.2mm	0.252 6.4mm	0.040 1.02mm	1600	1900
		9.9	1.0-4.8mm				
		11.4	1.6-6.4mm				
		13.0	3.2-8.0mm				
		14.6	4.8-9.6mm				
		16.2	6.4-11.2mm				
5/32" 4.0mm	4.1~4.2	8.9	1.2-3.2mm	0.311 7.9mm	0.050 1.27mm	2400	3200
		10.5	1.6-4.8mm				
		12.0	1.6-6.4mm				
		13.6	3.2-8.0mm				
		15.2	4.8-9.6mm				
		16.8	6.4-11.2mm				
3/16" 4.8mm	4.9~5.0	9.5	1.6-3.2mm	0.375 9.5mm	0.060 1.52mm	4100	4500
		11.1	1.6-4.8mm				
		12.7	1.6-6.4mm				
		14.3	3.2-8.0mm				
		15.9	4.8-9.6mm				
		17.5	6.4-11.2mm				
		19.3	8.0-12.7mm				
		20.7	9.6-14.3mm				
23.8	12.7-17.5mm						

Countersunk Head 120°

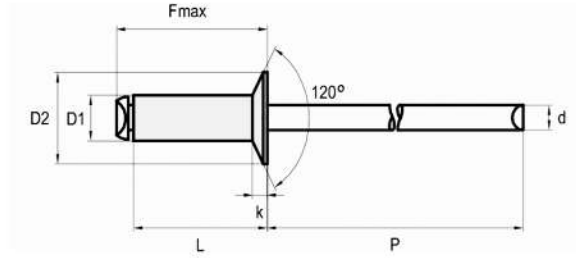
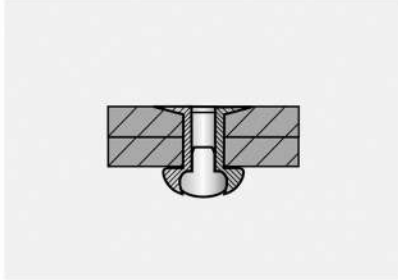
Blind Rivets




BODY LENGTH	GRIP RANGE						SHEAR		TENSILE	
	in	mm	in		mm		lbf	kn	lbf	kn
			min	max	min	max				
1/8" (3.2 mm) D1 = 1/8" 3.2 mm D2 = .220" 5.6 mm k = .031" .79 mm d = .076" 1.9 mm P = ≥ 1.063" 27.0 mm .13" 3.3 mm	.275	6.985	.063	.125	1.600	3.175	120	0.53	150	0.67
	.337	8.560	.126	.187	3.200	4.750				
	.400	10.160	.188	.250	4.775	6.350				
	.462	11.735	.251	.312	6.375	7.925				
	.525	13.335	.313	.375	7.950	9.525				
5/32" (4.0 mm) D1 = 5/32" 4.0 mm D2 = .280" 7.1 mm k = .040" 1.0 mm d = .095" 2.4 mm P = ≥ 1.063" 27.0 mm .161" 4.1 mm	.425	10.795	.188	.250	4.775	6.350	190	0.85	230	1.02
	.550	13.970	.251	.375	6.375	9.525				
	.675	17.145	.376	.500	9.550	12.700				
3/16" (4.8 mm) D1 = 3/16" 4.8 mm D2 = .350" 8.9 mm k = .050" 1.27 mm d = .114" 2.9 mm P = ≥ 1.063" 27.0 mm .193" 4.9 mm	.450	11.430	.188	.250	4.775	6.350	260	1.16	320	1.42
	.575	14.605	.251	.375	6.375	9.525				
	.700	17.780	.376	.500	9.550	12.700				
	.825	20.955	.501	.625	12.725	15.875				


Countersunk Head 120°

Blind Rivets

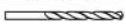


1/8" (3.2 mm)
 D1 = 1/8" 3.2 mm
 D2 = .220" 5.6 mm
 k = .031" .79 mm
 d = .076" 1.9 mm
 P = ≥ 1.063" 27.0 mm
 .13" 3.3 mm

BODY LENGTH ref.	GRIP RANGE		SHEAR		TENSILE					
			lb	kn	lb	kn				
	in	mm	min	max	min	max				
	.275	6.985	.063	.125	1.600	3.175	170	0.76	220	0.98
	.337	8.560	.126	.187	3.200	4.750				
	.400	10.160	.188	.250	4.775	6.350				
	.462	11.735	.251	.312	6.375	7.925				
	.525	13.335	.313	.375	7.950	9.525				

5/32" (4.0 mm)
 D1 = 5/32" 4.0 mm
 D2 = .280" 7.1 mm
 k = .040" 1.0 mm
 d = .095" 2.4 mm
 P = ≥ 1.063" 27.0 mm
 .161" 4.1 mm

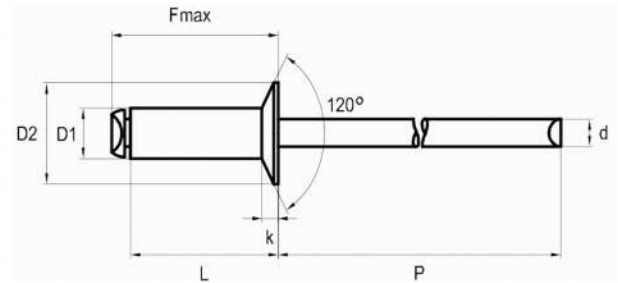
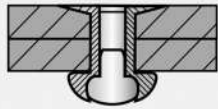
	.300	7.620	.063	.125	1.600	3.175	260	1.16	350	1.56
	.362	9.195	.126	.187	3.200	4.750				
	.425	10.795	.188	.250	4.775	6.350				
	.550	13.970	.251	.375	6.375	9.525				
	.675	17.145	.376	.500	9.550	12.700				

3/16" (4.8 mm)
 D1 = 3/16" 4.8 mm
 D2 = .350" 8.9 mm
 k = .050" 1.27 mm
 d = .114" 2.9 mm
 P = ≥ 1.063" 27.0 mm
 .193" 4.9 mm

	.450	11.430	.188	.250	4.775	6.350	380	1.69	500	2.22
	.575	14.605	.251	.375	6.375	9.525				
	.700	17.780	.376	.500	9.550	12.700				
	.825	20.955	.501	.625	12.725	15.875				

Countersunk Head 120°

Blind Rivets

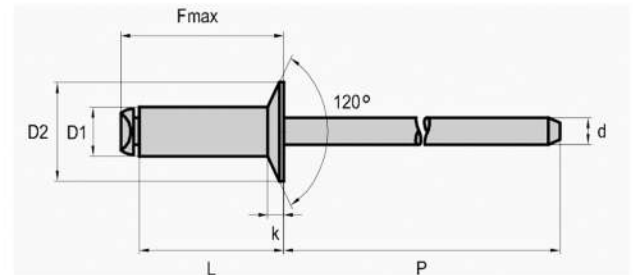
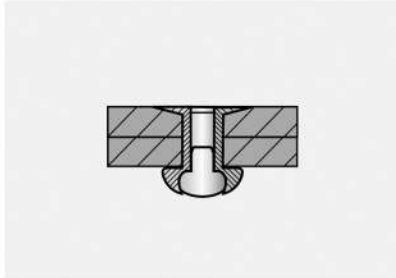


OPEN END

BODY LENGTH ref.		GRIP RANGE				SHEAR		TENSILE	
in	mm	in		mm		lbf	kn	lbf	kn
		min	max	min	max				
1/8" (3.2 mm)		.275	6.985	.063	.125	260	1.16	310	1.38
D1 = 1/8" 3.2 mm		.337	8.560	.126	.187				
D2 = .220" 5.6 mm		.400	10.160	.188	.250				
k = .031" .79 mm		.462	11.735	.251	.312				
d = .076" 1.9 mm		.525	13.335	.313	.375				
P = ≥ 1.063" 27.0 mm									
.13" 3.3 mm									
5/32" (4.0 mm)		.425	10.795	.188	.250	370	1.65	470	2.09
D1 = 5/32" 4.0 mm									
D2 = .280" 7.1 mm									
k = .040" 1.0 mm									
d = .095" 2.4 mm									
P = ≥ 1.063" 27.0 mm									
.161" 4.1 mm									
3/16" (4.8 mm)		.325	8.255	.063	.125	540	2.40	680	3.02
D1 = 3/16" 4.8 mm		.387	9.830	.126	.187				
D2 = .350" 8.9 mm		.450	11.430	.188	.250				
k = .050" 1.27 mm		.575	14.605	.251	.375				
d = .114" 2.9 mm									
P = ≥ 1.063" 27.0 mm									
.193" 4.9 mm									

Countersunk Head 120°

Blind Rivets

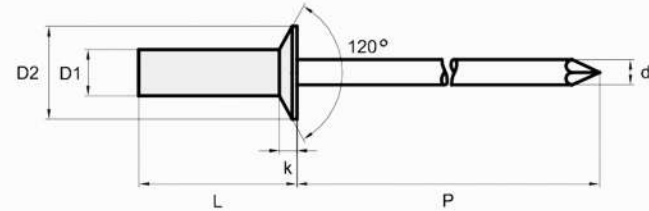
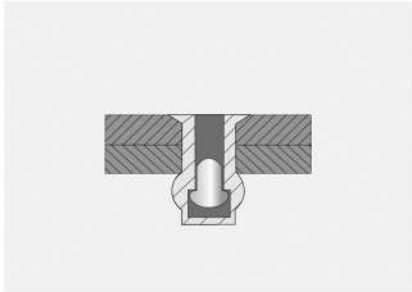


· OPEN END

BODY LENGTH ref.	GRIP RANGE					SHEAR		TENSILE		
	in	mm	in		mm		lbf	kn	lbf	kn
		min	max	min	max					
1/8" (3.2 mm) D1 = 1/8" 3.2 mm D2 = .220" 5.6 mm k = .031" .79 mm d = .076" 1.9 mm P = ≥ 1.063" 27.0 mm .13" 3.3 mm	.275	6.985	.063	.125	1.600	3.175	420	1.87	530	2.36
	.337	8.560	.126	.187	3.200	4.750				
	.400	10.160	.188	.250	4.775	6.350				
	.462	11.735	.251	.312	6.375	7.925				
	.525	13.335	.313	.375	7.950	9.525				
5/32" (4.0 mm) D1 = 5/32" 4.0 mm D2 = .280" 7.1 mm k = .040" 1.0 mm d = .095" 2.4 mm P = ≥ 1.063" 27.0 mm .161" 4.1 mm	.425	10.795	.188	.250	4.775	6.350	650	2.89	820	3.65
3/16" (4.8 mm) D1 = 3/16" 4.8 mm D2 = .350" 8.9 mm k = .050" 1.27 mm d = .114" 2.9 mm P = ≥ 1.063" 27.0 mm .193" 4.9 mm	.450	11.430	.188	.250	4.775	6.350	950	4.23	1200	5.34
	.575	14.605	.251	.375	6.375	9.525				
	.700	17.780	.376	.500	9.550	12.700				
	.825	20.955	.501	.625	12.725	15.875				

Countersunk Head

Sealed Blind Rivets

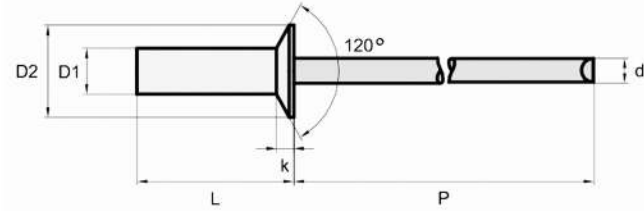
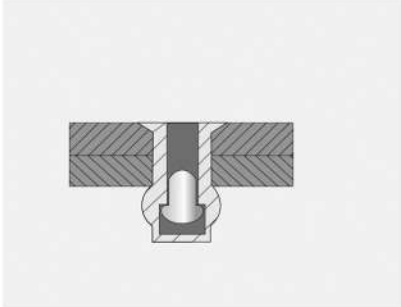


CLOSED END

BODY LENGTH ref.		GRIP RANGE				SHEAR		TENSILE			
		in	mm	in		mm		lbf	kn	lbf	kn
				min	max	min	max				
1/8" (3.2 mm) D1 = 1/8" 3.2 mm D2 = .230" 5.84 mm k = .042" 1.07 mm d = .074" 1.88 mm P = ≥ 1.063" 27.0 mm .13" 3.3 mm	.332	8.433	.031	.062	0.787	1.575	240	1.07	280	1.25	
	.395	10.033	.063	.125	1.600	3.175					
	.457	11.608	.126	.187	3.200	4.750					
	.520	13.208	.188	.250	4.775	6.350					
	.582	14.783	.251	.312	6.375	7.925					
	.645	16.383	.313	.375	7.950	9.525					
5/32" (4.0 mm) D1 = 5/32" 4.0 mm D2 = .310" 7.88 mm k = .051" 1.3 mm d = .092" 2.34 mm P = ≥ 1.063" 27.0 mm .161" 4.1 mm	.425	10.795	.063	.125	1.600	3.175	350	1.56	480	2.14	
	.487	12.370	.126	.187	3.200	4.750					
	.550	13.970	.188	.250	4.775	6.350					
	.612	15.545	.251	.312	6.375	7.925					
3/16" (4.8 mm) D1 = 3/16" 4.8 mm D2 = .375" 9.53 mm k = .060" 1.52 mm d = .110" 2.8 mm P = ≥ 1.063" 27.0 mm .193" 4.9 mm	.471	11.963	.063	.125	1.600	3.175	500	2.22	690	3.07	
	.538	13.665	.126	.187	3.200	4.750					
	.601	15.265	.188	.250	4.775	6.350					
	.736	18.694	.251	.375	6.375	9.525					

Countersunk Head

Sealed Blind Rivets

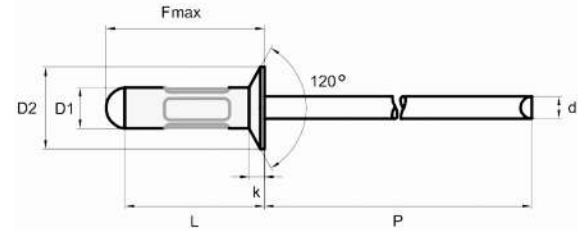
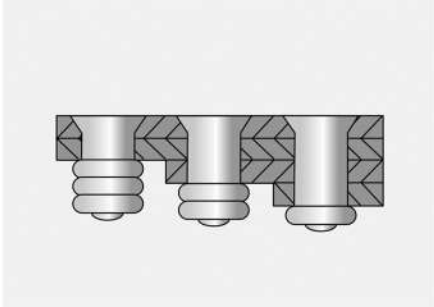





CLOSED END

BODY LENGTH ref.		GRIP RANGE				SHEAR		TENSILE			
in	mm	in		mm		lbf	kn	lbf	kn		
		min	max	min	max						
1/8" (3.2 mm) D1 = 1/8" 3.2 mm D2 = .230" 5.84 mm k = .042" 1.07 mm d = .074" 1.88 mm P = ≥ 1.063" 27.0 mm .13" 3.3 mm		.332	8.433	.031	.062	0.787	1.575	240	1.07	280	1.25
.395	10.033	.063	.125	1.600	3.175						
.457	11.608	.126	.187	3.200	4.750						
.520	13.208	.188	.250	4.775	6.350						
5/32" (4.0 mm) D1 = 5/32" 4.0 mm D2 = .310" 7.88 mm k = .051" 1.3 mm d = .092" 2.34 mm P = ≥ 1.063" 27.0 mm .161" 4.1 mm		.425	10.795	.063	.125	1.600	3.175	350	1.56	480	2.14
.487	12.370	.126	.187	3.200	4.750						
.550	13.970	.188	.250	4.775	6.350						
.612	15.545	.251	.312	6.375	7.925						
3/16" (4.8 mm) D1 = 3/16" 4.8 mm D2 = .375" 9.53 mm k = .060" 1.52 mm d = .110" 2.8 mm P = ≥ 1.063" 27.0 mm .193" 4.9 mm		.471	11.963	.063	.125	1.600	3.175	500	2.22	690	3.07
.538	13.665	.126	.187	3.200	4.750						
.601	15.265	.188	.250	4.775	6.350						
.736	18.694	.251	.375	6.375	9.525						

Countersunk Head

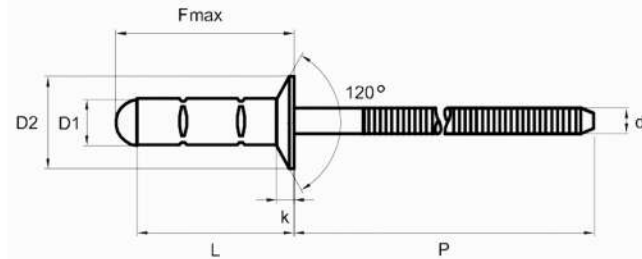
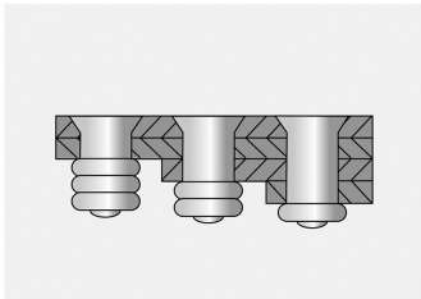
Multi-Grip Blind Rivets



	F-MAX		GRIP RANGE				SHEAR		TENSILE	
	in	mm	in		mm		lbf	kn	lbf	kn
			min	max	min	max				
1/8" (3.2 mm) D1 = 1/8" 3.2 mm D2 = .220" 5.59 mm k = .040" 1.02 mm d = .076" 1.9 mm P = ≥ 1.063" 27.0 mm  .13" 3.3 mm	.480	12.192	.093	.250	2.362	6.350	165	.073	230	1.02
	.530	13.462	.155	.312	3.937	7.925				
	.580	14.732	.217	.375	5.512	9.525				
5/32" (4.0 mm) D1 = 5/32" 4.0 mm D2 = .281" 7.14 mm k = .050" 1.27 mm d = .095" 2.4 mm P = ≥ 1.063" 27.0 mm  .161" 4.1 mm	.560	14.224	.109	.312	2.769	7.925	255	1.13	375	1.67
3/16" (4.8 mm) D1 = 3/16" 4.8 mm D2 = .348" 8.84 mm k = .060" 1.52 mm d = .114" 2.9 mm P = ≥ 1.063" 27.0 mm  .193" 4.9 mm	.610	15.494	.125	.312	3.175	7.925	345	1.53	525	2.34
	.800	20.320	.250	.500	6.350	12.700				

Countersunk Head

Multi-Grip Blind Rivets



1/8" (3.2 mm)

D1 = 1/8" 3.2 mm
 D2 = .220" 5.59 mm
 k = .040" 1.02 mm
 d = .076" 1.9 mm
 P = ≥ 1.063" 27.0 mm
 .13" 3.3 mm

F-MAX		GRIP RANGE				SHEAR		TENSILE	
in	mm	in		mm		lbf	kn	lbf	kn
		min	max	min	max				
.551	13.995	.039	.236	0.991	5.994	200	0.89	265	1.18

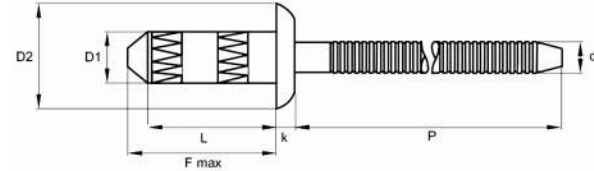
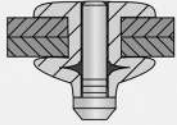
3/16" (4.8 mm)


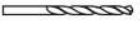
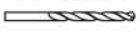

D1 = 3/16" 4.8 mm
 D2 = .348" 8.84 mm
 k = .060" 1.52 mm
 d = .114" 2.9 mm
 P = ≥ 1.063" 27.0 mm
 .193" 4.9 mm

.540	13.716	.093	.250	2.362	6.350	540	2.40	650	2.89
.670	17.018	.165	.375	4.191	9.525				
.790	20.066	.250	.500	6.350	12.700				

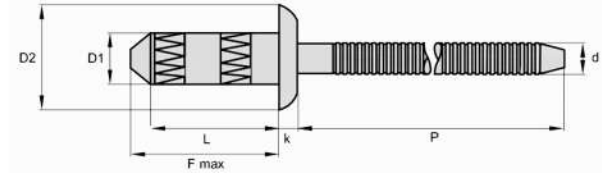
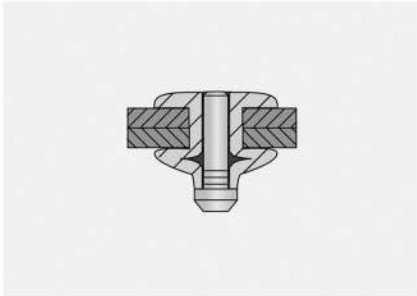
SEMI-STRUCTURAL BLIND RIVETS

DOME HEAD



F-MAX	GRIP RANGE				SHEAR *		TENSILE *			
	in	mm	in	mm	lb	kn	lb	kn		
1/8" (3.2 mm) D1 = 1/8" 3.2 mm D2 = .268" 6.8 mm k = .055" 1.4 mm d = .080 2.0 mm P = ≥ 1.063" 27.0 mm  .130 - .134" 3.3 - 3.4 mm	.358	9.093	.039	.118	0.991	2.997	270	1.20	292	1.30
	.461	11.709	.118	.197	2.997	5.004	393	1.75	292	1.30
	.551	13.995	.197	.276	5.004	7.010	562	2.50	292	1.30
5/32" (4.0 mm) D1 = 5/32" 4.0 mm D2 = .315" 8.0 mm k = .059" 1.5 mm d = .103" 2.6 mm P = ≥ 1.063" 27.0 mm  .161 - .169" 4.1 - 4.3 mm	.409	10.389	.039	.118	0.991	2.997	539	2.40	629	2.80
	.508	12.903	.118	.197	2.997	5.004	787	3.50	629	2.80
	.618	15.697	.197	.276	5.004	7.010	921	4.10	629	2.80
3/16" (4.8 mm) D1 = 3/16" 4.8 mm D2 = .378" 9.6 mm k = .059" 1.5 mm d = .126" 3.2 mm P = ≥ 1.063" 27.0 mm  .193 - .201" 4.9 - 5.1 mm	.476	12.090	.059	.138	1.499	3.505	809	3.60	854	3.80
	.579	14.707	.138	.236	3.505	5.994	944	4.20	854	3.80
	.693	17.602	.236	.335	5.994	8.509	1258	5.60	854	3.80
.236" (6.0 mm) D1 = .236" 6.0 mm D2 = .484" 12.3 mm k = .083" 2.1 mm d = .158" 4.0 mm P = ≥ 1.26" 32.0 mm  .240 - .248" 6.1 - 6.3 mm	.551	13.995	.059	.157	1.499	3.988	944	4.20	1213	5.40
	.669	16.993	.118	.236	2.997	5.994	1213	5.40	1213	5.40
	.787	19.990	.236	.354	5.994	8.992	1910	8.50	1213	5.40
	.906	23.012	.354	.472	8.992	11.989	1910	8.50	1213	5.40

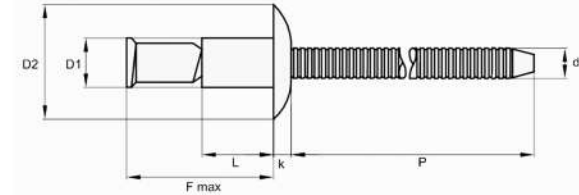
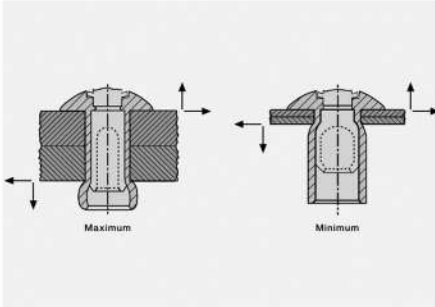
DOME HEAD




F-MAX		GRIP RANGE				SHEAR *		TENSILE *			
		in	mm	in	mm	lb	kn	lb	kn		
in	mm	min	max	min	max	lb	kn	lb	kn		
1/8" (3.2 mm)		.360	9.144	.039	.118	0.991	2.997	360	1.60	450	2.00
D1 = 1/8" 3.2 mm D2 = .260" 6.6 mm k = .043" 1.1 mm d = .083" 2.1 mm P = ≥ 1.063" 27.0 mm		.460	11.684	.118	.197	2.997	5.004	382	1.70	450	2.00
 .130 - .134" 3.3 - 3.4 mm		.560	14.224	.197	.276	5.004	7.010	719	3.20	450	2.00
5/32" (4.0 mm)		.410	10.414	.039	.118	0.991	2.997	629	2.80	899	4.00
D1 = 5/32" 4.0 mm D2 = .315" 8.0 mm k = .059" 1.5 mm d = .102" 2.6 mm P = ≥ 1.063" 27.0 mm		.510	12.954	.118	.197	2.997	5.004	1169	5.20	899	4.00
 .161 - .169" 4.1 - 4.3 mm		.620	15.748	.197	.276	5.004	7.010	1169	5.20	899	4.00
3/16" (4.8 mm)		.510	12.954	.059	.138	1.499	3.505	1236	5.50	1124	5.00
D1 = 3/16" 4.8 mm D2 = .378" 9.6 mm k = .059" 1.5 mm d = .126" 3.2 mm P = ≥ 1.063" 27.0 mm		.610	15.494	.138	.236	3.505	5.994	1236	5.50	1124	5.00
 .193 - .201" 4.9 - 5.1 mm		.730	18.542	.236	.335	5.994	8.509	1258	5.60	1124	5.00

STRUCTURAL BLIND RIVETS

DOME HEAD




3/16" (4.8 mm)

D1 = 3/16" 4.8 mm
 D2 = .395" 10.1 mm
 k = .083" 2.1 mm
 d = .118" 3.0 mm
 P = ≥ 1.063" 27.0 mm
 .193 - .201"
 4.9 - 5.1 mm

F-MAX		GRIP RANGE				SHEAR *		TENSILE *	
in	mm	in		mm		lbf	kn	lbf	kn
		min	max	min	max				
.721	18.313	.064	.270	1.626	6.858	675	3.00	500	2.22
.946	24.028	.064	.437	1.626	11.100	675	3.00	500	2.22

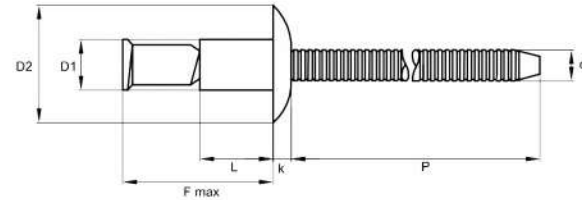
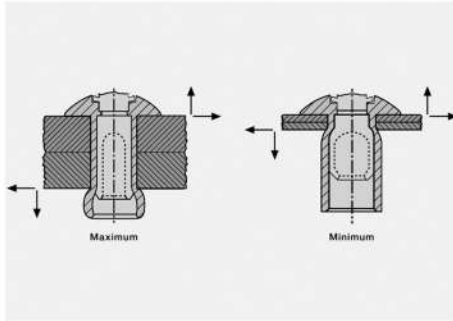
1/4" (6.4 mm)

D1 = 1/4" 6.4 mm
 D2 = .525" 13.4 mm
 k = .114" 2.9 mm
 d = .158" 4.0 mm
 P = ≥ 1.26" 32.0 mm
 .260 - .275"
 6.6 - 7.0 mm

.965	24.511	.080	.375	2.032	9.525	1350	6.01	950	4.23
1.366	34.696	.080	.625	2.032	15.875	1350	6.01	950	4.23

Continue...

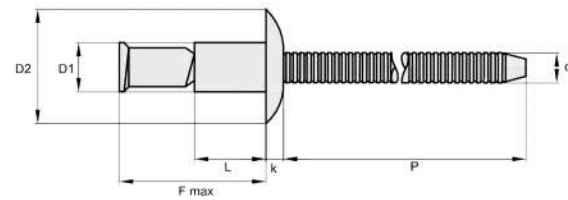
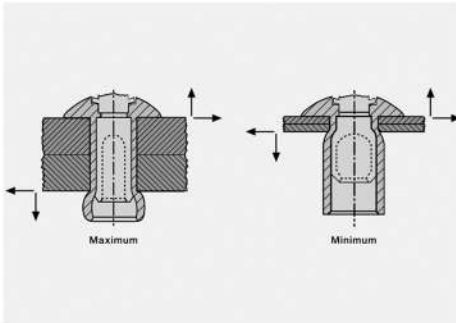
DOME HEAD



F-MAX		GRIP RANGE				SHEAR *		TENSILE *	
		in	mm	in		mm		lbf	kn
		min	max	min	max				
3/16" (4.8 mm)									
D1 = 3/16"	4.8 mm								
D2 = .395"	10.1 mm								
k = .083"	2.1 mm								
d = .118"	3.0 mm								
P = ≥ 1.063"	27.0 mm								
 .193 - .201" 4.9 - 5.1 mm									
		.064	.270	1.626	6.858	1450	6.45	1150	5.12
		.064	.437	1.626	11.100	1450	6.45	1150	5.12
1/4" (6.4 mm)									
D1 = 1/4"	6.4 mm								
D2 = .525"	13.4 mm								
k = .114"	2.9 mm								
d = .158"	4.0 mm								
P = ≥ 1.26"	32.0 mm								
 .260 - .275" 6.6 - 7.0 mm									
		.080	.375	2.032	9.525	2650	11.79	2350	10.45
		.080	.625	2.032	15.875	2650	11.79	2350	10.45


Continue...

DOME HEAD




F-MAX		GRIP RANGE				SHEAR *		TENSILE *	
		in		mm		lb	kn	lb	kn
in	mm	min	max	min	max	lb	kn	lb	kn
3/16" (4.8 mm)									
.716	18.186	.064	.270	1.626	6.858	1450	6.45	1150	5.12
.962	24.435	.064	.437	1.626	11.100	1450	6.45	1150	5.12

3/16" (4.8 mm)

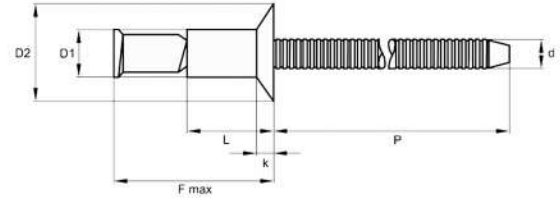
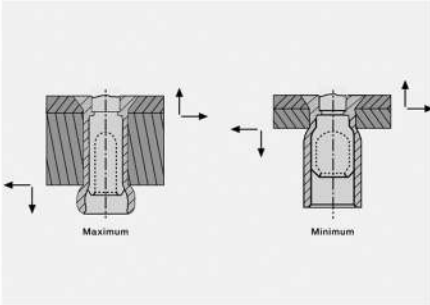
D1 = 3/16" 4.8 mm
 D2 = .395" 10.1 mm
 k = .083" 2.1 mm
 d = .118" 3.0 mm
 P = ≥ 1.063" 27.0 mm
 .193 - .201"
 4.9 - 5.1 mm

1/4" (6.4 mm)									
.933	23.698	.080	.375	2.032	9.525	2650	11.79	2350	10.45
1.296	32.918	.080	.625	2.032	15.875	2650	11.79	2350	10.45

1/4" (6.4 mm)


D1 = 1/4" 6.4 mm
 D2 = .525" 13.4 mm
 k = .114" 2.9 mm
 d = .158" 4.0 mm
 P = ≥ 1.26" 32.0 mm
 .260 - .275"
 6.6 - 7.0 mm

Countersunk Head 100°



3/16" (4.8 mm)

D1 = 3/16" 4.8 mm
 D2 = .325" 8.26 mm
 k = .084" 2.1 mm
 d = .118" 3.0 mm
 P = ≥ 1.063" 27.0 mm

 .193 - .201"
 4.9 - 5.1 mm

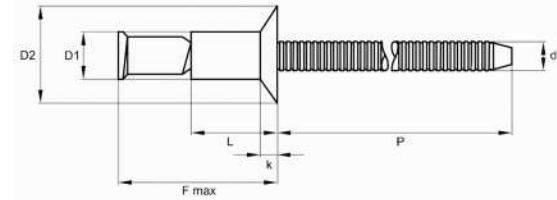
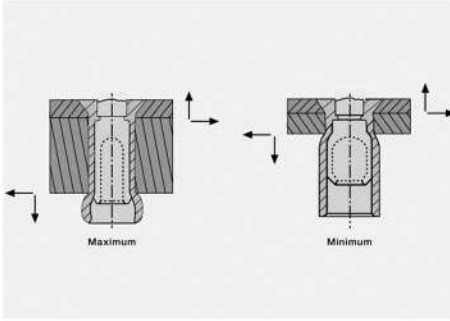
1/4" (6.4 mm)

D1 = 1/4" 6.4 mm
 D2 = .395" 10.03 mm
 k = .093" 2.36 mm
 d = .158" 4.0 mm
 P = ≥ 1.26" 32.0 mm


 .260 - .275"
 6.6 - 7.0 mm

F-MAX		GRIP RANGE				SHEAR *		TENSILE *	
in	mm	in		mm		lbf	kn	lbf	kn
		min	max	min	max				
.786	19.964	.125	.331	3.175	8.407	675	3.00	500	2.22
1.032	26.213	.125	.481	3.175	12.217	675	3.00	500	2.22
1.069	27.153	.125	.475	3.175	12.065	1350	6.01	950	4.23


Countersunk Head 100°



3/16" (4.8 mm)

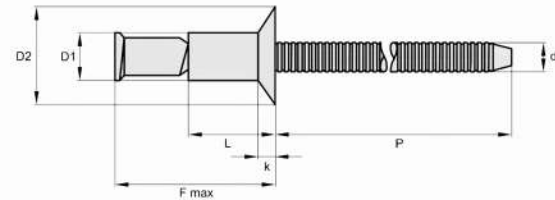
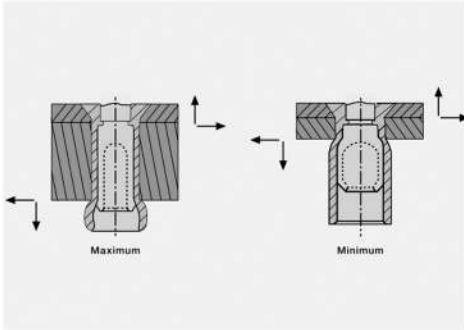
D1 = 3/16" 4.8 mm
 D2 = .325" 8.26 mm
 k = .084" 2.1 mm
 d = .118" 3.0 mm
 P = ≥ 1.063" 27.0 mm
 .193 - .201"
 4.9 - 5.1 mm

1/4" (6.4 mm)

D1 = 1/4" 6.4 mm
 D2 = .395" 10.03 mm
 k = .093" 2.36 mm
 d = .158" 4.0 mm
 P = ≥ 1.26" 32.0 mm
 .260 - .275"
 6.6 - 7.0 mm

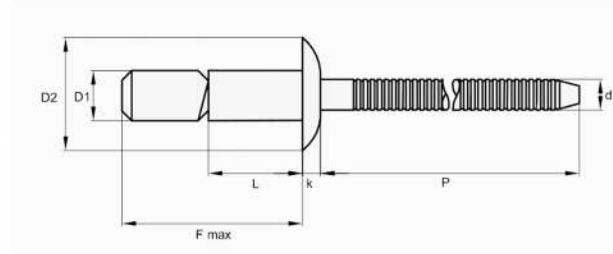
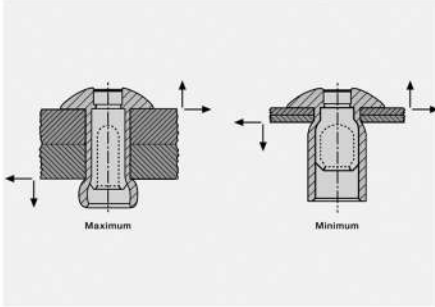
F-MAX		GRIP RANGE				SHEAR *		TENSILE *	
in	mm	in		mm		lbf	kn	lbf	kn
		min	max	min	max				
.786	19.964	.125	.331	3.175	8.407	1450	6.45	1150	5.12
1.037	26.340	.125	.475	3.175	12.065	2650	11.79	2350	10.45

Countersunk Head 100°



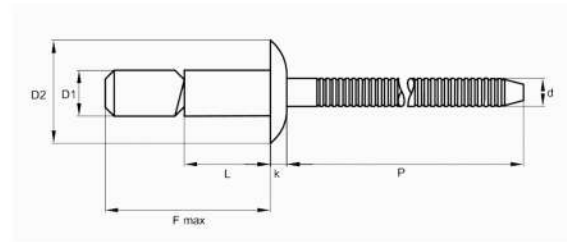
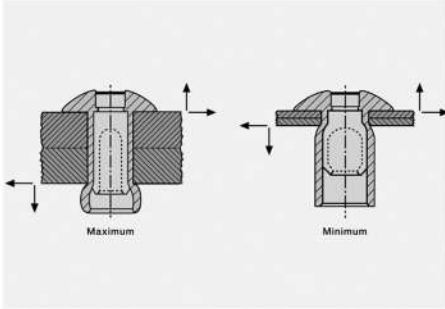
F-MAX		GRIP RANGE				SHEAR *		TENSILE *	
in	mm	in		mm		lbf	kn	lbf	kn
		min	max	min	max				
3/16" (4.8 mm)									
.716	18.186	.125	.331	3.175	8.407	1450	6.45	1150	5.12
D1 = 3/16" 4.8 mm D2 = .325" 8.26 mm k = .084" 2.1 mm d = .118" 3.0 mm P = ≥ 1.063" 27.0 mm  .193 - .201" 4.9 - 5.1 mm									
1/4" (6.4 mm)									
.933	23.698	.125	.475	3.175	12.065	2650	11.79	2350	10.45
D1 = 1/4" 6.4 mm D2 = .395" 10.03 mm k = .093" 2.36 mm d = .158" 4.0 mm P = ≥ 1.26" 32.0 mm  .260 - .275" 6.6 - 7.0 mm									



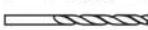

DOME HEAD



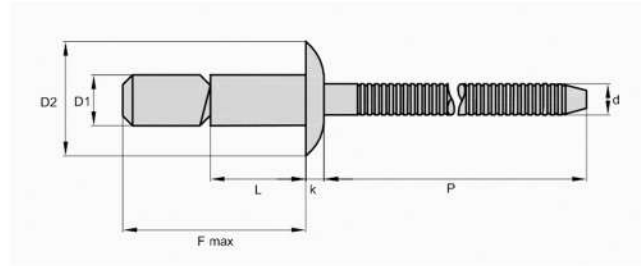
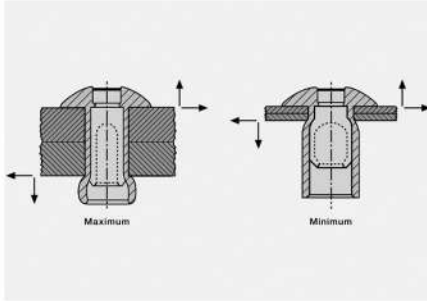
F-MAX		GRIP RANGE				SHEAR *		TENSILE *		
		in	mm	in		mm		lbf	kn	lbf
		min	max	min	max					
3/16" (4.8 mm) D1 = 3/16" 4.8 mm D2 = .400" 10.1 mm k = .090" 2.29 mm d = .118" 3.0 mm P = ≥ 1.063" 27.0 mm  .193 - .201" 4.9 - 5.1 mm	.842	21.387	.062	.270	1.575	6.858	600	2.67	450	2.00
	.975	24.765	.062	.437	1.575	11.100	600	2.67	450	2.00
1/4" (6.4 mm) D1 = 1/4" 6.4 mm D2 = .530" 13.46 mm k = .117" 2.97 mm d = .158" 4.0 mm P = ≥ 1.26" 32.0 mm  .260 - .275" 6.6 - 7.0 mm	1.181	29.997	.080	.375	2.032	9.525	1300	5.78	830	3.69
	1.400	35.560	.080	.625	2.032	15.875	1300	5.78	830	3.69

DOME HEAD



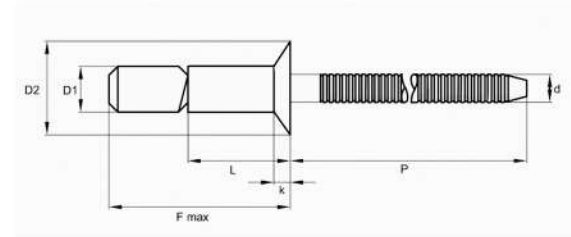
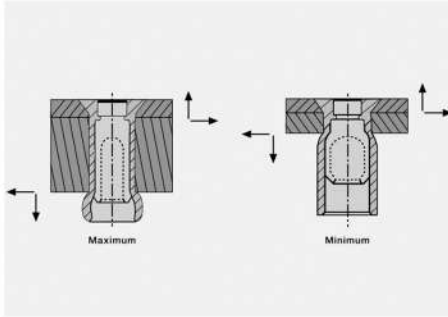
	F-MAX		GRIP RANGE				 *		 *	
	in	mm	in		mm		lbf	kn	lbf	kn
3/16" (4.8 mm) D1 = 3/16" 4.8 mm D2 = .400" 10.1 mm k = .090" 2.29 mm d = .118" 3.0 mm P = ≥ 1.063" 27.0 mm  .193 - .201" 4.9 - 5.1 mm	.716	18.186	.062	.270	1.575	6.858	1300	5.78	1000	4.45
	1.003	25.476	.062	.437	1.575	11.100	1300	5.78	1000	4.45
1/4" (6.4 mm) D1 = 1/4" 6.4 mm D2 = .530" 13.46 mm k = .117" 2.97 mm d = .158" 4.0 mm P = ≥ 1.26" 32.0 mm  .260 - .275" 6.6 - 7.0 mm	1.181	29.997	.080	.375	2.032	9.525	2400	10.68	1850	8.23
	1.425	36.195	.080	.625	2.032	15.875	2400	10.68	1850	8.23

DOME HEAD




F-MAX		GRIP RANGE				SHEAR *		TENSILE *	
		in	mm	in		mm		lbf	kn
		min	max	min	max				
3/16" (4.8 mm)									
D1 = 3/16" 4.8 mm									
D2 = .400" 10.1 mm									
k = .090" 2.29 mm									
d = .118" 3.0 mm									
P = ≥ 1.063" 27.0 mm									
 .193 - .201"									
4.9 - 5.1 mm									
1/4" (6.4 mm)									
D1 = 1/4" 6.4 mm									
D2 = .530" 13.46 mm									
k = .117" 2.97 mm									
d = .158" 4.0 mm									
P = ≥ 1.26" 32.0 mm									
 .260 - .275"									
6.6 - 7.0 mm									

Countersunk Head 100°




3/16" (4.8 mm)

D1 = 3/16" 4.8 mm
 D2 = .345" 8.76 mm
 k = .070" 1.78 mm
 d = .118" 3.0 mm
 P = ≥ 1.063" 27.0 mm
 .193 - .201"
 4.9 - 5.1 mm

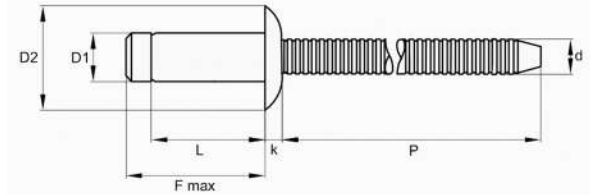
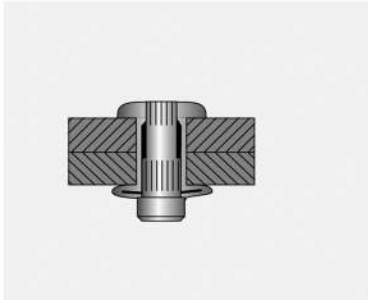
F-MAX		GRIP RANGE				SHEAR *		TENSILE *	
in	mm	in		mm		lbf	kn	lbf	kn
		min	max	min	max				
.793	20.142	.125	.331	3.175	8.407	1300	5.78	1000	4.45


1/4" (6.4 mm)

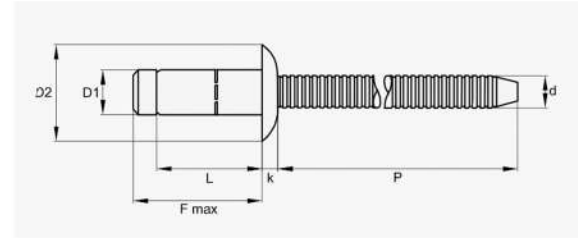
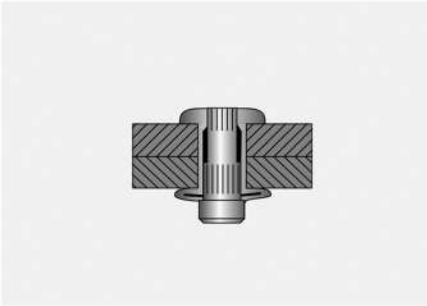
D1 = 1/4" 6.4 mm
 D2 = .415" 10.54 mm
 k = .079" 2.01 mm
 d = .158" 4.0 mm
 P = ≥ 1.26" 32.0 mm
 .260 - .275"
 6.6 - 7.0 mm

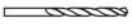
1.115	28.321	.170	.475	4.318	12.065	2400	10.68	1850	8.23
-------	--------	------	------	-------	--------	------	-------	------	------

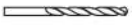
DOME HEAD



F-MAX		GRIP RANGE				SHEAR *		TENSILE *	
in	mm	in		mm		lbf	kn	lbf	kn
		min	max	min	max				
1/4" (6.4 mm)									
D1 = 1/4" 6.4 mm									
D2 = .530" 13.46 mm									
k = .110" 2.8 mm									
d = .158" 4.0 mm									
P = ≥ 1.26" 32.0 mm									
 .260 - .275"									
6.6 - 7.0 mm									
.539	13.691	.060	.138	1.524	3.505	2360	10.50	1978	8.80
.590	14.986	.110	.189	2.794	4.801	2698	12.00	1978	8.80
.612	15.545	.132	.211	3.353	5.359	2810	12.50	1978	8.80
.669	16.993	.189	.268	4.801	6.807	2810	12.50	1978	8.80
.747	18.974	.268	.346	6.807	8.788	3147	14.00	1978	8.80
.775	19.685	.295	.374	7.493	9.500	3372	15.00	1978	8.80
.826	20.980	.346	.425	8.788	10.795	3597	16.00	1978	8.80
.905	22.987	.425	.504	10.795	12.802	3597	16.00	1978	8.80



3/16" (4.8 mm)
 D1 = 3/16" 4.8 mm
 D2 = .386" 9.8 mm
 k = .087" 2.2 mm
 d = .119" 3.02 mm
 P = ≥ 1.181" 30.0 mm

 .193 - .201"
 4.9 - 5.1 mm

1/4" (6.4 mm)
 D1 = 1/4" 6.4 mm
 D2 = .512" 13.0 mm
 k = .118" 3.0 mm
 d = .164" 4.17 mm
 P = ≥ 1.26" 32.0 mm

 .260 - .268"
 6.6 - 6.8 mm

F-MAX		GRIP RANGE				SHEAR *		TENSILE *	
in	mm	in		mm		lbf	kn	lbf	kn
		min	max	min	max				
.492	12.497	.059	.138	1.499	3.505	1010	4.49	795	3.54
.590	14.986	.138	.236	3.505	5.994	1370	6.09	795	3.54
.689	17.501	.236	.335	5.994	8.509	1430	6.36	795	3.54
.787	19.990	.335	.433	8.509	10.998	1430	6.36	795	3.54
.885	22.479	.433	.531	10.998	13.487	1430	6.36	795	3.54
.532	13.513	.059	.138	1.499	3.505	1570	6.98	1480	6.58
.590	14.986	.110	.189	2.794	4.801	2100	9.34	1480	6.58
.670	17.018	.189	.268	4.801	6.807	2330	10.36	1480	6.58
.748	18.999	.268	.346	6.807	8.788	2560	11.39	1480	6.58
.826	20.980	.346	.425	8.788	10.795	2560	11.39	1480	6.58
.905	22.987	.425	.504	10.795	12.802	2560	11.39	1480	6.58
.984	12.802	.504	.583	12.802	14.808	2560	11.39	1480	6.58
1.063	27.000	.583	.661	14.808	16.789	2560	11.39	1480	6.58
1.142	29.007	.661	.740	16.789	18.796	2560	11.39	1480	6.58

DEDICATED IMPEX CO.

D - 189, Industrial Focal Point, Patiala
147003 Punjab, India
info@dicfasteners.com
+91-95922-28222

DiCFASSTENERS
A Brand by Dedicated Impex Co.