



DiCFASTENERS

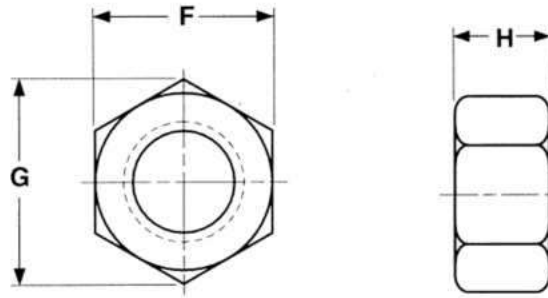
A Brand by Dedicated Impex Co.



INDUSTRIAL NUTS

Product Name	Page No.
Hex Nuts.....	03
Hex Slotted Nuts.....	04-05
Heavy Hex Nuts.....	06
Flange Nuts.....	07
Caps Nuts.....	08
Coupling Nuts.....	09-10
Keps K lock Nuts.....	11
Lock Nuts.....	12-13
Square Nuts.....	14
Knurled Nuts.....	15-16
Tee Nuts.....	17-18
Wing Nuts.....	19-20
Anchor Nuts.....	21
Weld Nuts.....	22-24

HEX NUTS

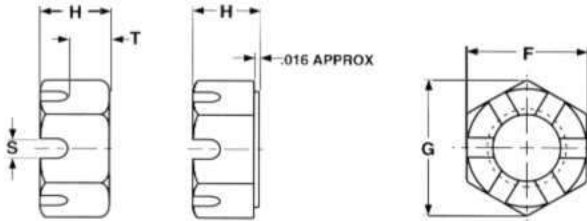


METRIC

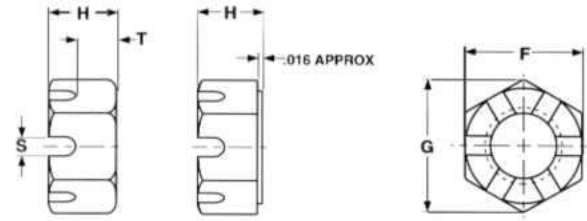
Nominal Size	Thread Pitch	F		G	H	
		Width Across Flats		Width Across Corners	Thickness	
		Max	Min	Min	Max	Min
M1.6	0.35	3.2	3.02	3.41	1.3	1.05
M2	0.4	4	3.82	4.32	1.6	1.35
M2.5	0.45	5	4.82	5.45	2	1.75
M3	0.5	5.5	5.32	6.01	2.4	2.15
M4	0.7	7	6.78	7.66	3.2	2.9
M5	0.8	8	7.78	8.79	4.7	4.4
M6	1	10	9.78	11.05	5.2	4.9
M8	1.25	13	12.73	14.38	6.8	6.44
M10	1.5	16	15.73	17.77	8.4	8.04
M12	1.75	18	17.73	20.03	10.8	10.37
M14	2	21	20.67	23.35	12.8	12.1
M16	2	24	23.67	26.75	14.8	14.1
M20	2.5	30	29.16	32.95	18	16.9
M24	3	36	35	39.55	21.5	20.2
M30	3.5	46	45	50.85	25.6	24.3
M36	4	55	53.8	60.79	31	29.4
M42	4.5	65	63.1	71.30	34	32.4
M48	5	75	73.1	82.60	38	36.4
M56	5.5	85	82.8	93.56	45	43.4
M64	6	95	92.8	104.86	51	49.1

HEX SLOTTED NUTS

Slotted Hex Nut
Low Carbon Steel



Heavy Slotted Nut
Low Carbon Steel



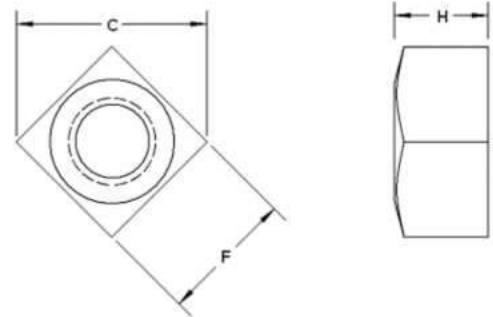
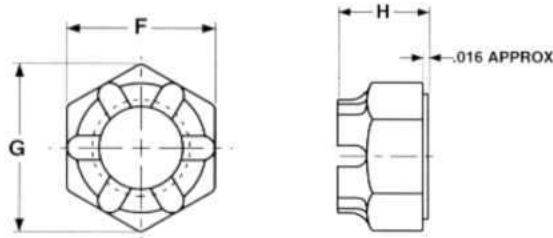
Diameter	F	H	Weight Per C
	Across Flats	Thick	
1/4	7/16	7/32	.8
5/16	1/2	17/64	.9
3/8	9/16	21/64	1.3
7/16	11/16	3/8	2.4
1/2	3/4	7/16	3.2
9/16	7/8	31/64	
5/8	15/16	35/64	6.1
3/4	1-1/8	41/64	10.3
7/8	1-5/16	3/4	17.1
1	1-1/2	55/64	25
1 1/8	1 11/16	31/32	35.3
1 1/4	1 7/8	1 1/16	47.5
1 3/8	2 1/16	1 11/64	64.2
1 1/2	2 1/4	1 9/32	82.9
1 3/4	2 5/8	1 1/2	132
2	3	1 23/32	198
2 1/4	3 3/8	1 59/64	279
2 1/2	3 3/4	2 1/4	383

ANSI / ASME B18.2.2

Diameter	F	T	Weight Per C
	Across Flats	Thick	
1/4	1/2	15/64	.99
5/16	9/16	19/64	1.51
3/8	11/16	23/64	2.69
7/16	3/4	27/64	3.56
1/2	7/8	31/64	5.7
9/16	15/16	35/64	7.13
5/8	1 1/16	39/64	10.20
3/4	1 1/4	47/64	17.1
7/8	1 7/16	55/64	27.2
1	1 5/8	63/64	38.5
1 1/8	1 13/16	1 7/64	53.7
1 1/4	2	1 7/32	70.6
1 3/8	2 3/16	1 11/32	
1 1/2	2 3/8	1 15/32	118
1 3/4	2 3/4	1 23/32	184
2	3 1/8	1 31/32	274
2 1/4	3 1/2	2 13/64	
2 1/2	3 7/8	2 29/64	
2 3/4	4 1/4	2 45/64	
3	4 5/8	2 61/64	
3 1/4	5	3 3/16	
3 1/2	5 3/8	3 7/16	
3 3/4	5 3/4	3 11/16	
4	6 1/8	3 15/16	

Continue...

Slotted Hex Castle Nut Low Carbon Steel

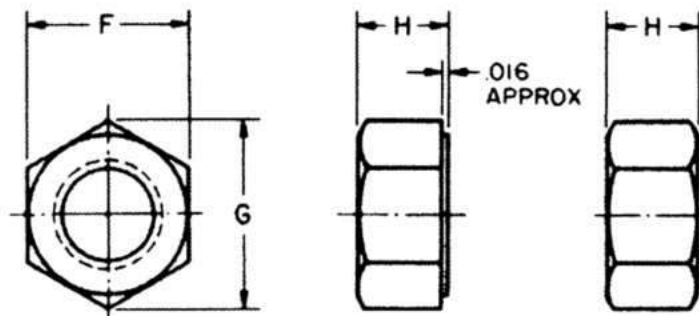


Hex Castle Nuts – ANSI B18.2.2			
Diameter	F	H	Weight Per C
	Across Flats	Height	
1/4	7/16	9/32	.75
5/16	1/2	21/64	1.1
3/8	9/16	13/32	1.52
7/16	11/16	29/64	2.11
1/2	3/4	9/16	3.83
9/16	7/8	39/64	
5/8	15/16	23/32	7.11
3/4	1-1/8	13/16	10.6
7/8	1-5/16	29/32	17.1
1	1-1/2	1	25.3
1 1/8	1 11/16	1 5/32	37.1
1 1/4	1 7/8	1 1/4	52.5
1 3/8	2 1/16	1 3/8	75.1
1 1/2	2 1/4	1 1/2	94.8
1 5/8	2 7/16	1 19/32	114
1 3/4	2 5/8	1 23/32	134
2	3	1 31/32	200
2 1/4	3 3/8	2 1/4	282
2 1/2	3 3/4	2 1/2	387

Diameter	F	T	Weight Per C
	Across Flats	Thick	
6-32	5/16	7/64	.75
8-32	11/32	1/8	1.1
10-24	3/8	1/8	1.52
10-32	3/8	1/8	2.11
1/4	7/16	7/32	3.83
5/16	9/16	17/64	
3/8	5/8	21/64	7.11
7/16	3/4	3/8	10.6
1/2	13/16	7/16	17.1
5/8	1	35/64	25.3
3/4	1 1/8	21/32	37.1
7/8	1 5/16	49/64	52.5
1	1 1/2	7/8	75.1
1 1/8	1 11/16	1	94.8
1 1/4	1 7/8	1 3/32	114
1 3/8	2 1/16	1 13/64	134
1 1/2	2 1/4	1 5/16	200

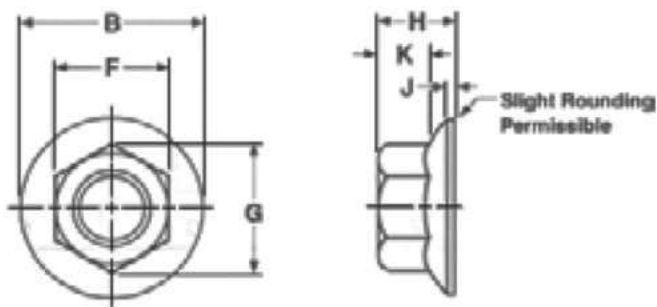
All Castle Nuts are Fine Thread

HEAVY HEX NUTS



Nominal Size or Basic Major Thread Diameter	F			G		H			
	Width Across Flats			Width Across Corners		Thickness Heavy Hex Nuts			
	Basic	Max	Min	Max	Min	Basic	Max	Min	
1/4	0.2500	1/2	0.500	0.488	0.577	0.556	15/64	0.250	0.218
5/16	0.3125	9/16	0.562	0.546	0.650	0.622	19/64	0.314	0.280
3/8	0.3750	11/16	0.688	0.669	0.794	0.763	23/64	0.377	0.341
7/16	0.4375	3/4	0.750	0.728	0.866	0.830	27/64	0.441	0.403
1/2	0.5000	7/8	0.875	0.850	1.010	0.969	31/64	0.504	0.464
9/16	0.5625	15/16	0.938	0.909	1.083	1.037	35/64	0.568	0.526
5/8	0.6250	1 1/16	1.062	1.031	1.227	1.175	39/64	0.631	0.587
3/4	0.7500	1 1/4	1.250	1.212	1.443	1.382	47/64	0.758	0.710
7/8	0.8750	1 7/16	1.438	1.394	1.660	1.589	55/64	0.885	0.833
1	1.0000	1 5/8	1.625	1.575	1.876	1.796	63/64	1.012	0.956
1 1/8	1.1250	1 13/16	1.812	1.756	2.093	2.002	1 7/64	1.139	1.079
1 1/4	1.2500	2	2.000	1.938	2.309	2.209	1 7/32	1.251	1.187
1 3/8	1.3750	2 3/16	2.188	2.119	2.526	2.416	1 11/32	1.378	1.310
1 1/2	1.5000	2 3/8	2.375	2.300	2.742	2.622	1 15/32	1.505	1.433
1 5/8	1.6250	2 9/16	2.562	2.481	2.959	2.828	1 19/32	1.632	1.556
1 3/4	1.7500	2 3/4	2.750	2.662	3.175	3.035	1 23/32	1.759	1.679
1 7/8	1.8750	2 15/16	2.938	2.844	3.392	3.242	1 27/32	1.886	1.802
2	2.0000	3 1/8	3.125	3.025	3.608	3.449	1 31/32	2.013	1.925
2 1/4	2.2500	3 1/2	3.500	3.388	4.041	3.862	2 13/64	2.251	2.155
2 1/2	2.5000	3 7/8	3.875	3.750	4.474	4.275	2 29/64	2.505	2.401
2 3/4	2.7500	4 1/4	4.250	4.112	4.907	4.688	2 45/64	2.759	2.647
3	3.0000	4 5/8	4.625	4.475	5.340	5.102	2 61/64	3.013	2.893
3 1/4	3.2500	5	5.000	4.838	5.774	5.515	3 3/16	3.252	3.124
3 1/2	3.5000	5 3/8	5.375	5.200	6.207	5.928	3 7/16	3.506	3.370
3 3/4	3.7500	5 3/4	5.750	5.562	6.640	6.341	3 11/16	3.760	3.616
4	4.0000	6 1/8	6.125	5.925	7.073	6.755	3 15/16	4.014	3.862

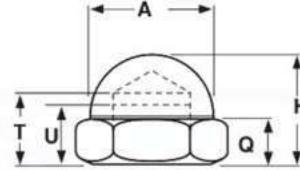
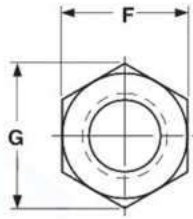
FLANGE NUTS



Nominal Size or Basic Major Diameter of Thread		F		G	
		Width Across Flats		Width Across Corners	
		Max.	Min.	Max.	Min.
6	0,138	0,312	0,302	0,361	0,342
8	0,164	0,344	0,334	0,397	0,381
10	0,190	0,375	0,365	0,433	0,416
12	0,216	0,438	0,428	0,505	0,488
1/4	0,250	0,438	0,428	0,505	0,488
5/16	0,313	0,500	0,489	0,577	0,557
3/8	0,375	0,562	0,551	0,650	0,628
7/16	0,438	0,688	0,675	0,794	0,768
1/2	0,500	0,750	0,736	0,866	0,840
5/8	0,625	0,938	0,922	1,083	1,051
3/4	0,750	1,125	1,088	1,299	1,240

B		H		K	J
Flange Diameter		Nut Thickness		Wrenching Length	Flange Thickness
Max.	Min.	Max.	Min.	Min.	Max.
0,422	0,406	0,171	0,156	0,10	0,02
0,469	0,452	0,203	0,187	0,13	0,02
0,500	0,480	0,219	0,203	0,13	0,03
0,594	0,574	0,236	0,222	0,14	0,04
0,594	0,574	0,236	0,222	0,14	0,04
0,680	0,660	0,283	0,268	0,17	0,04
0,750	0,728	0,347	0,330	0,23	0,04
0,937	0,910	0,395	0,375	0,26	0,04
1,031	1,000	0,458	0,437	0,31	0,05
1,281	1,248	0,569	0,545	0,40	0,05
1,500	1,460	0,675	0,627	0,46	0,06

CAP NUTS



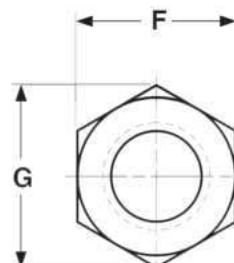
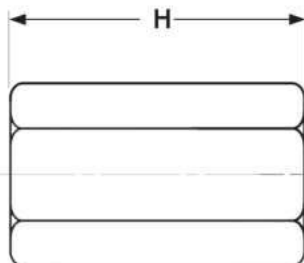
ONE PIECE CLOSED-END HEX CAP NUTS,

Nominal Size or Basic Major Diameter of Thread		F		G		A	H	Q	T	U
		Width Across Flats		Width Across Corners						
		Max	Min	Max	Min	Max	Min			
6	0.1380	0.3125	0.302	0.361	0.344	0.30	0.34	0.16	0.25	0.16
8	0.1640	0.3125	0.302	0.361	0.344	0.30	0.34	0.16	0.25	0.16
10	0.1900	0.3750	0.362	0.433	0.413	0.36	0.41	0.19	0.28	0.19
1/4	0.2500	0.4375	0.428	0.505	0.488	0.41	0.47	0.22	0.34	0.25
5/16	0.3125	0.5000	0.489	0.577	0.557	0.47	0.53	0.25	0.41	0.31
3/8	0.3750	0.5625	0.551	0.650	0.628	0.53	0.62	0.28	0.45	0.38
1/2	0.5000	0.7500	0.736	0.866	0.840	0.72	0.81	0.38	0.59	0.50
5/8	0.6250	0.9375	0.922	1.083	1.051	0.91	1.00	0.47	0.75	0.62
3/4	0.7500	1.0625	1.045	1.227	1.191	1.03	1.16	0.53	0.88	0.75

TWO PIECE CLOSED-END HEX CAP NUTS

Nominal Size or Basic Major Diameter of Thread		F		G		H	
		Width Across Flats		Width Across Corners		Overall Height	
		Max	Min	Max	Min	Max	Min
4	0.1120	0.248	0.225	-	-	0.200	0.177
5	0.1250	0.3125	0.302	0.361	0.344	0.260	0.240
6	0.1380	0.3125	0.302	0.361	0.344	0.260	0.240
8	0.1640	0.3125	0.302	0.361	0.344	0.260	0.240
10	0.1900	0.3750	0.362	0.433	0.413	0.291	0.271
1/4	0.2500	0.4375	0.423	0.505	0.482	0.338	0.318
5/16	0.3125	0.562	0.545	0.650	0.621	0.385	0.365
3/8	0.3750	0.625	0.607	0.722	0.692	0.432	0.412
7/16	0.4375	0.673	0.659	0.775	0.750	0.680	0.660
1/2	0.5000	0.750	0.736	0.866	0.840	0.572	0.552
9/16	0.5625	0.875	0.861	1.010	0.982	0.482	0.462
5/8	0.6250	0.938	0.909	1.083	1.037	0.807	0.787
3/4	0.7500	1.12	1.08	-	-	1.12	1.08
7/8	0.8750	1.250	1.212	1.443	1.382	1.420	1.380

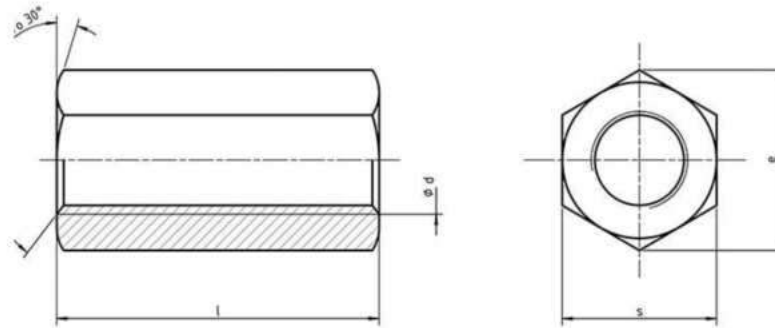
COUPLING NUTS



HEX COUPLING NUTS										Coupling Nut Supply
Nominal Size and Threads per Inch	Basic Major Diameter of Thread	F			G		H			
		Width Across Flats			Width Across Corners		Length			
		Basic	Max	Min	Max	Min	Basic	Max	Min	
4-40	0.1120	5/16	0.312	0.302	0.361	0.344	7/16	0.448	0.408	
6-32	0.1380	5/16	0.312	0.302	0.361	0.344	1/2	0.510	0.470	
8-32	0.1640	5/16	0.312	0.302	0.361	0.344	5/8	0.64	0.61	
8-32	0.1640	3/8	0.375	0.365	0.433	0.416	5/8	0.64	0.61	
10-24	0.1900	5/16	0.312	0.302	0.361	0.344	3/4	0.76	0.74	
10-24	0.1900	3/8	0.375	0.365	0.433	0.416	3/4	0.76	0.74	
10-32	0.1900	5/16	0.312	0.302	0.361	0.344	3/4	0.76	0.74	
10-32	0.1900	3/8	0.375	0.365	0.433	0.416	3/4	0.76	0.74	
1/4-20	0.2500	3/8	0.375	0.365	0.433	0.416	7/8	0.89	0.86	
1/4-20	0.2500	7/16	0.438	0.428	0.505	0.488	7/8	0.89	0.86	
1/4-20	0.2500	7/16	0.438	0.428	0.505	0.488	1-1/2	1.51	1.48	
1/4-20	0.2500	7/16	0.438	0.428	0.505	0.488	1-3/4	1.76	1.73	
1/4-28	0.2500	3/8	0.375	0.365	0.433	0.416	7/8	0.89	0.86	
5/16-18	0.3125	7/16	0.438	0.428	0.505	0.488	7/8	0.89	0.86	
5/16-18	0.3125	1/2	0.500	0.489	0.577	0.557	7/8	0.89	0.86	
5/16-18	0.3125	1/2	0.500	0.489	0.577	0.557	1-1/8	1.13	1.11	
5/16-18	0.3125	1/2	0.500	0.489	0.577	0.557	1-3/4	1.76	1.69	
5/16-24	0.3125	7/16	0.438	0.428	0.505	0.488	7/8	0.89	0.86	
3/8-16	0.3750	1/2	0.500	0.489	0.577	0.557	1-1/8	1.13	1.11	
3/8-16	0.3750	1/2	0.500	0.489	0.577	0.557	1-3/8	1.39	1.34	
3/8-16	0.3750	9/16	0.562	0.551	0.650	0.628	1-3/4	1.76	1.69	
3/8-16	0.3750	5/8	0.625	0.613	0.722	0.698	1-3/4	1.76	1.73	
3/8-24	0.3750	1/2	0.500	0.489	0.577	0.557	1-1/8	1.13	1.11	
1/2-13	0.5000	5/8	0.625	0.613	0.722	0.698	1-1/4	1.26	1.24	
1/2-13	0.5000	11/16	0.688	0.663	0.794	0.756	1-3/4	1.76	1.73	
1/2-13	0.5000	3/4	0.750	0.728	0.866	0.830	1-3/4	1.76	1.73	
1/2-20	0.5000	5/8	0.625	0.613	0.722	0.698	1-1/4	1.26	1.24	
5/8-11	0.6250	13/16	0.813	0.782	0.939	0.891	1-7/8	1.89	1.86	
5/8-11	0.6250	13/16	0.813	0.782	0.939	0.891	2-1/8	2.14	2.10	
5/8-11	0.6250	13/16	0.813	0.782	0.939	0.891	3	3.03	2.97	
5/8-18	0.6250	13/16	0.813	0.782	0.939	0.891	2-1/8	2.14	2.10	
3/4-10	0.7500	1	1.000	0.963	1.155	1.097	2-1/4	2.27	2.22	
3/4-10	0.7500	1	1.000	0.963	1.155	1.097	3	3.03	2.97	
3/4-16	0.7500	1	1.000	0.963	1.155	1.097	2-1/4	2.26	2.19	
7/8-9	0.8750	1-1/4	1.250	1.212	1.443	1.382	2-1/2	2.53	2.47	
1-8	1.0000	1-1/4	1.250	1.212	1.443	1.382	2-1/2	2.53	2.47	
1-8	1.0000	1-3/8	1.375	1.325	1.588	1.511	2-3/4	2.78	2.72	

Continue...

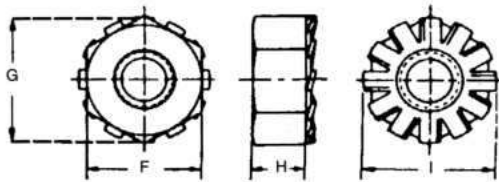
Metric DIN 6334 Hexagon Coupling Nuts Height 3 × Dia



Dimensions of Metric DIN 6334 Hexagon Coupling Nuts height 3 x D

d	s	e	L	Weight kg/1000pcs
M6	10	11.05	18	7
M8	13	14.38	24	18
M10	17	18.9	30	42
M12	19	21.1	36	63
M14	22	24.49	42	95.5
M16	24	26.75	48	122
M18	27	29.56	54	140
M20	30	33.53	60	240
M22	32	35.03	66	300
M24	36	39.98	72	412
M27	41	45.2	81	608
M30	46	50.85	90	825
M33	50	55.37	99	1100
M36	55	60.79	108	1470

KEPS-K LOCK NUTS

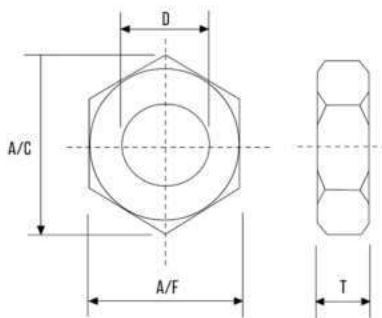


Nominal Size or Basic Thread Diameter	F			
	Width Across Flats			Min
	Basic	Max	Min	
4	0.1120	1/4	0.250	0.241
6	0.1380	5/16	0.312	0.302
8	0.1640	11/32	0.344	0.332
10	0.1900	3/8	0.375	0.362
1/4	0.2500	7/16	0.438	0.423
5/16	0.3125	1/2	0.500	0.489
3/8	0.3750	9/16	0.562	0.551

G		H		I
Width Across Corners		Thickness		Washer Diameter
Hex				
Max	Min	Max	Min	Ref
0.289	0.275	0.098	0.087	0.281
0.361	0.344	0.114	0.102	0.344
0.397	0.378	0.130	0.117	0.375
0.433	0.413	0.130	0.117	0.406
0.505	0.482	0.193	0.178	0.500
0.577	0.557	0.273	0.258	0.578
0.650	0.628	0.385	0.365	0.656

LOCK NUTS

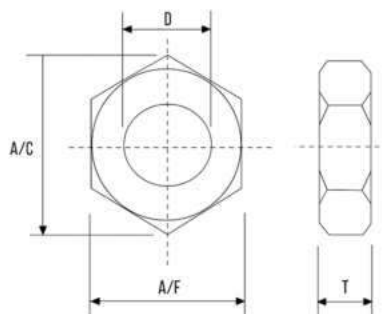
HEX LOCK NUT (METRIC) - DIN 439-2 / ISO 4035



DIA	TPI	A/C MIN	THICKNESS (T)		A/F	
	(COARSE)		MIN	MAX	MIN	MAX
M6	1.00	10.89	2.90	3.20	9.78	10.00
M8	1.25	14.20	3.70	4.00	12.73	13.00
M10	1.50	18.90	4.70	5.00	16.73	17.00
M12	1.75	21.10	5.70	6.00	18.67	19.00
M14	2.00	24.49	6.42	7.00	20.67	21.0
M16	2.00	26.75	7.42	8.00	23.67	24.00
M18	2.50	29.56	8.42	9.00	26.16	27.00
M20	2.50	32.95	9.10	10.00	29.16	30.00
M22	2.50	35.03	9.90	11.00	31.00	32.00
M24	3.00	39.55	10.90	12.00	35.00	36.00
M27	3.00	45.20	12.40	13.50	40.00	41.00
M30	3.50	50.85	13.90	15.00	45.00	46.00
M33	3.50	55.37	15.40	16.50	49.00	50.00
M36	4.00	60.79	16.90	18.00	53.80	55.00
M39	4.00	66.44	18.20	19.50	58.80	60.00
M42	4.50	71.30	19.70	21.00	63.10	65.00
M45	4.50	76.95	21.20	22.50	68.10	70.00
M48	5.00	82.60	22.70	24.00	73.10	75.00
M52	5.00	88.25	24.70	26.00	78.10	80.00
M56	5.50	18.90	4.70	5.00	16.73	17.00

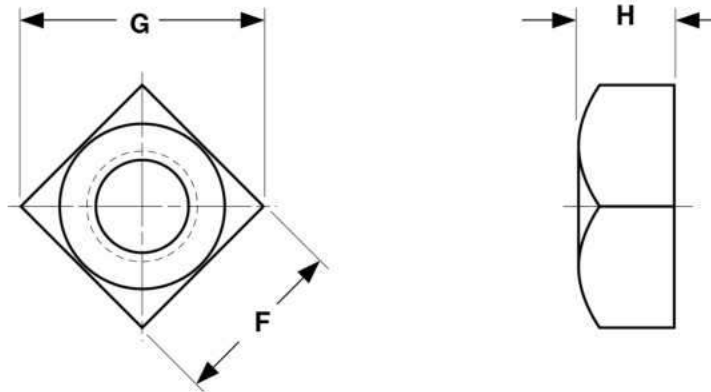
Continue...

HEX LOCK NUT (IMPERIAL) – ANSI B18.2.2 / BS1768



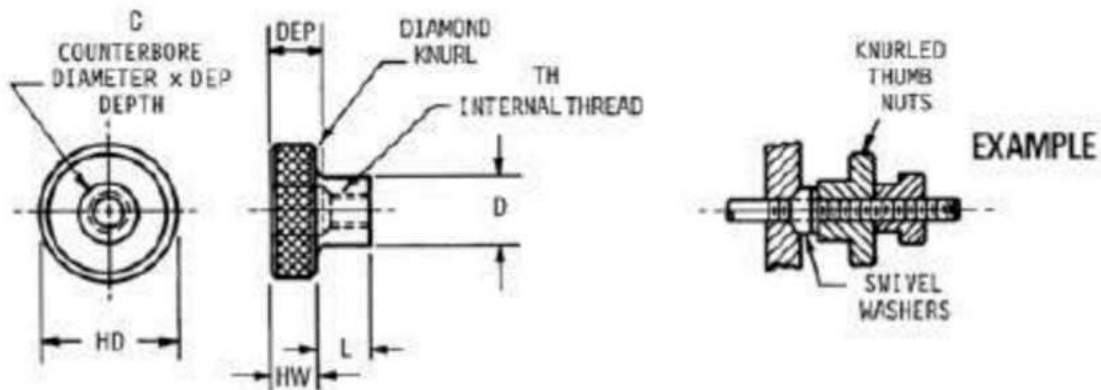
DIA	A/F			A/C		T		
	BASIC	MAX	MIN	MAX	MIN	BASIC	MAX	MIN
1/4	7/16	0.438	0.428	0.505	0.488	5/32	0.164	0.150
5/16	1/2	0.500	0.489	0.577	0.557	3/16	0.195	1.180
3/8	9/16	0.562	0.551	0.650	0.628	7/32	0.227	1.210
7/16	11/16	0.688	0.675	0.794	0.768	1/4	0.260	0.240
1/2	3/4	0.750	0.736	0.866	0.840	5/16	0.323	0.302
9/16	7/8	0.875	0.861	1.010	0.982	5/16	0.324	0.301
5/8	1.5/16	0.938	0.922	1.083	1.051	3/8	0.387	0.363
3/4	1.1/8	1.125	1.088	1.299	1.240	27/64	0.446	0.398
7/8	1.5/16	1.312	1.269	1.516	1.447	31/64	0.510	0.458
1	1.1/2	1.500	1.450	1.732	1.653	35/64	0.575	0.519
1.1/8	1.11/16	1.688	1.631	1.949	1.859	39/64	0.639	0.579
1.1/4	1.7/8	1.875	1.812	2.165	2.066	23/32	0.751	0.687
1.3/8	2.1/16	2.062	1.994	2.382	2.273	25/32	0.815	0.747
1.1/2	2.1/4	2.250	2.175	2.598	2.480	27/32	0.880	0.808
1.5/8	2.7/16	2.438	2.356	2.185	2.686	29/32	0.945	0.869
1.3/4	2.5/8	2.625	2.558	3.031	2.893	31/32	1.009	0.929
2	3	3.000	2.900	3.464	3.306	1.3/32	1.138	1.050
2.1/4	3.3/8	3.375	3.236	3.897	3.719	1.7/32	1.267	1.171
2.1/2	3.3/4	3.750	3.625	4.330	4.133	1.11/32	1.396	1.292
2.3/4	4.1/8	4.125	3.988	4.763	4.546	1.15/32	1.525	1.413

SQUARE NUTS



Nominal or Basic Major Diameter of Thread		F			G		H		
		Width Across Flats			Width Across Corners		Thickness		
		Basic	Max	Min	Max	Min	Basic	Max	Min
1/4	0.2500	7/16	0.438	0.425	0.619	0.554	7/32	0.235	0.203
5/16	0.3125	9/16	0.562	0.547	0.795	0.721	17/64	0.283	0.249
3/8	0.3750	5/8	0.625	0.606	0.884	0.802	21/64	0.346	0.310
7/16	0.4375	3/4	0.750	0.728	1.061	0.970	3/8	0.394	0.356
1/2	0.5000	13/16	0.812	0.788	1.149	1.052	7/16	0.458	0.418
5/8	0.6250	1	1.000	0.969	1.414	1.300	35/64	0.569	0.525
3/4	0.7500	1-1/8	1.125	1.088	1.591	1.464	21/32	0.680	0.632
7/8	0.8750	1-5/16	1.312	1.269	1.856	1.712	49/64	0.792	0.740
1	1.0000	1-1/2	1.500	1.450	2.121	1.961	7/8	0.903	0.847
1-1/8	1.1250	1-11/16	1.688	1.631	2.386	2.209	1	1.030	0.970
1-1/4	1.2500	1-7/8	1.875	1.812	2.652	2.458	1-3/32	1.126	1.062
1-1/2	1.5000	2-1/4	2.250	2.175	3.182	2.956	1-5/16	1.348	1.276

KNURLED NUTS

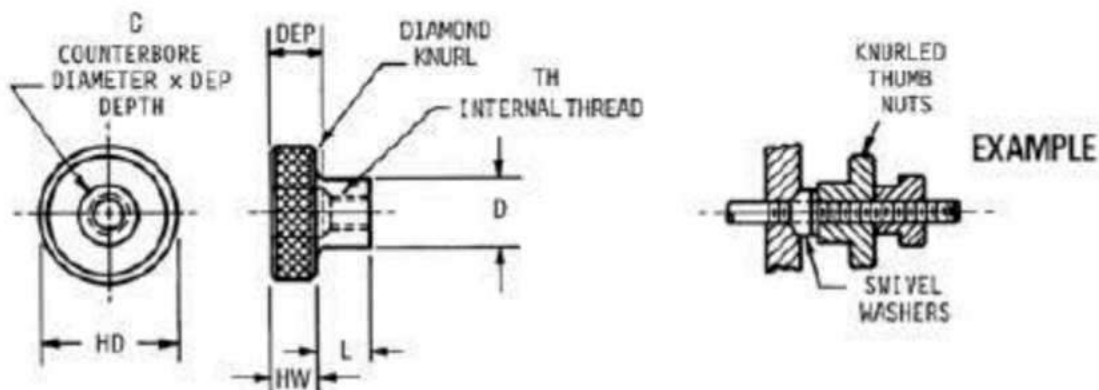


Material: 303 Stainless Steel

INCH SIZES

TH #	L	D	HD	HW	C	DEP
4-40	1/4	1/4	1/2	1/8	1/8	1/8
	1/2		3/8			
	1/4		1/8			
	1/2		3/8			
6-32	1/4	1/4	1/2	1/8	26	3/32
	1/2		11/32			
	1/4		3/32			
	1/2		11/32			
8-32	1/4	5/16	1/2	1/8	-	-
	1/2		1/4			
	1/4		-			
	1/2		1/4			
10-24	1/4	3/8	1/2	3/16	-	-
	1/2		1/4			
	1/4		-			
	1/2		1/4			
10-32	1/4	3/8	1/2	3/16	-	-
	1/2		1/4			
	1/4		-			
	1/2		1/4			
1/4-20	1/4	1/2	3/4	1/4	-	-
	1/2		1/4			
	1/4		-			
	1/2		1/4			
	3/4		1/2			

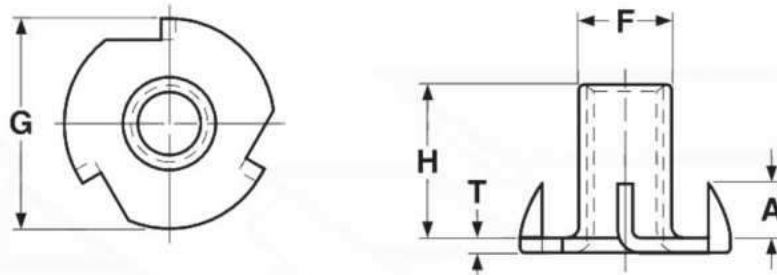
Continue..



METRIC SIZES

TH	L	D	HD	HW	C	DEP
M3 x 5,0	6	6,0	12	3,0	3,2	6,0
	12		12			
	6		19			
	12		19			
M4 x 7,0	6	8,0	12	3,0	4,2	6,0
	12		12			
	6		19			
	12		19			
M5 x 8,0	6	10,0	12	5,0	5,3	7,5
	12		12			
	6		25			
	12		25			
M6 X 1,0	6	12,5	19	6,5	6,4	9,0
	12		19			
	6		25,5			
	12		25,5			
	19		25,5		6,4	15,0

TEE NUTS

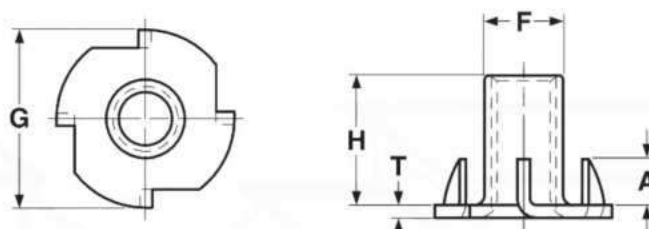


3-PRONG

3-PRONG T-NUTS, STRAIGHT BARREL

Thread Size	H	G	F	A	T	Drill Size	Thread Size	H	G	F	A	T	Drill Size
	Barrel Height (±1/32)	Flange Diam. (±1/32)	Barrel Diam. (±.015)	Prong Height (±1/32)	Material Thickness (±.015)			Barrel Height (±1/32)	Flange Diam. (±1/32)	Barrel Diam. (±.015)	Prong Height (±1/32)	Material Thickness (±.015)	
4-40	1/8	23/64	.130	3/32	.024	9/64	1/4-20	3/8	3/4	.305	1/4	.047	5/16
4-40	1/4	23/64	.141	3/32	.031	9/64	1/4-20	7/16	3/4	.305	5/16	.047	5/16
6-32	1/4	1/2	.188	1/8	.035	13/64	1/4-20	1/2	3/4	.305	7/32-1/4	.047	5/16
8-32	1/4	23/32	.208	7/32	.030	7/32	1/4-20	9/16	3/4	.305	7/32	.047	5/16
8-32	5/16	3/4	.208	1/4	.035	7/32	5/16-18	5/16	7/8	.360	9/32	.047	3/8
10-24	1/4	3/4	.243	5/32	.039	1/4	5/16-18	3/8	7/8	.390	1/4	.063	25/64
10-24	5/16	3/4	.243	7/32	.040	1/4	5/16-18	7/16	7/8	.390	1/4	.063	13/32
10-24	7/16	3/4	.243	5/16	.040	1/4	5/16-18	1/2	7/8	.360	1/4	.063	3/8
10-32	5/16	3/4	.243	7/32	.040	1/4	5/16-18	5/8	7/8	.390	5/16	.063	25/64
10-32	3/8	3/4	.243	1/4	.040	1/4	3/8-16	5/16	1	.420	9/32	.063	27/64
10-32	7/16	3/4	.243	5/16	.040	1/4	3/8-16	7/16	1	.440	11/32	.063	29/64
1/4-20	1/4	3/4	.305	3/16	.047	5/16	3/8-16	5/8	1	.440	9/32	.063	29/64
1/4-20	5/16	3/4	.305	7/32	.047	5/16							

Continue..



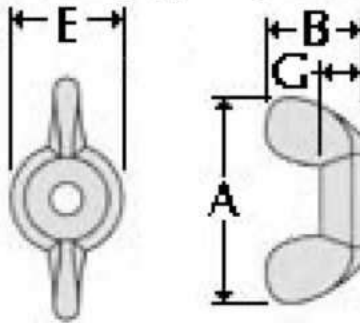
4-PRONG

4-PRONG T-NUTS, STRAIGHT BARREL

Thread Size	H	G	F	A	T	Drill Size	Thread Size	H	G	F	A	T	Drill Size
	Barrel Height (±1/32)	Flange Diam. (±1/32)	Barrel Diam. (±.015)	Prong Height (±1/32)	Material Thickness (±.015)			Barrel Height (±1/32)	Flange Diam. (±1/32)	Barrel Diam. (±.015)	Prong Height (±1/32)	Material Thickness (±.015)	
6-32	1/4	1/2	.188	1/8	.035	13/64	1/4-20	3/8	3/4	.305	7/32	.047	5/16
8-32	1/4	23/32	.208	3/16	.031	7/32	1/4-20	7/16	3/4	.305	1/4	.047	5/16
8-32	5/16	3/4	.208	1/4	.035	7/32	1/4-20	1/2	3/4	.305	7/32	.047	5/16
8-32	3/8	3/4	.208	1/4	.035	7/32	1/4-20	9/16	3/4	.305	1/4	.047	5/16
8-32	7/16	3/4	.208	1/4	.035	7/32	5/16-18	5/16	7/8	.360	9/32	.047	3/8
10-24	5/16	3/4	.243	7/32	.040	1/4	5/16-18	3/8	7/8	.390	1/4	.063	25/64
10-24	7/16	23/32	.243	7/32	.040	1/4	5/16-18	7/16	7/8	.360	1/4	.047	3/8
10-32	5/16	3/4	.243	7/32	.040	1/4	5/16-18	1/2	7/8	.390	1/4	.063	13/32
10-32	3/8	3/4	.243	1/4	.043	1/4	5/16-18	5/8	7/8	.375-.390	1/4-5/16	.060-.063	3/8, 25/64
10-32	7/16	3/4	.243	7/32	.043	1/4	3/8-16	5/16	1	.440	9/32	.063	27/64
1/4-20	1/4	3/4	.305	7/32	.047	5/16	3/8-16	7/16	1	.440	11/32	.063	29/64
1/4-20	5/16	3/4	.305	7/32	.047	5/16	3/8-16	5/8	1	.440	5/16	.063	29/64



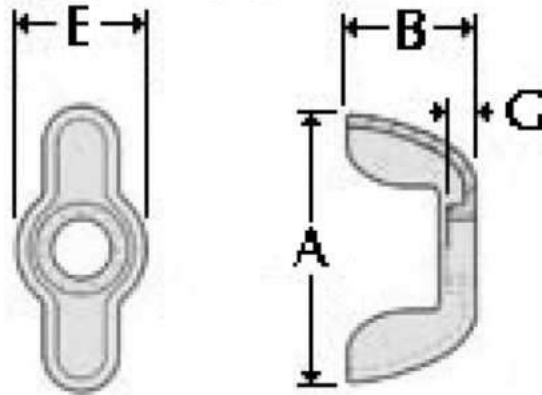
Wing Nut – Cold Forged (Type A)



Nominal Size	A		B		E		G		Weight per C
	Wing Span		Wing Height		Bass Diameter		Bass Height		
	Max	Min	Max	Min	Max	Min	Max	Min	
6	.72	.59	.41	.28	.33	.29	.14	.10	.41
8	.91	.78	.47	.34	.43	.39	.18	.14	.84
10	.91	.78	.47	.34	.43	.39	.18	.14	.82
1/4	1.120	.97	.57	.43	.50	.45	.22	.17	1.22
5/16	1.25	1.12	.66	.53	.58	.51	.25	.20	2.15
3/8	1.44	1.31	.79	.65	.70	.64	.30	.26	3.55
7/16	1.94	1.81	1.00	.87	.93	.86	.39	.35	7.75
1/2	1.94	1.81	1.00	.87	.93	.86	.39	.35	8.61
5/8	2.76	2.62	1.44	1.31	1.19	1.13	.55	.51	

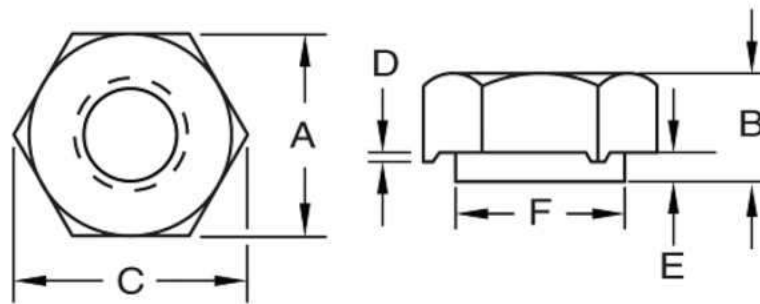
Wing Nut – Stamped

(Type A)



Nominal Size	A		B		E		G	Weight per C
	Wing Span		Wing Height		Bass Diameter			
	Max	Min	Max	Min	Max	Min		
6	.78	.72	.40	.34	.41	.35	.08	.4
8	.78	.72	.40	.34	.41	.35	.08	.4
10	.91	.85	.47	.41	.53	.47	.10	.5
1/4	1.11	1.05	.50	.44	.62	.56	.11	1.0
5/16	1.30	1.24	.59	.53	.73	.67	.14	1.4
3/8	1.41	1.34	.67	.61	.83	.77	.16	2

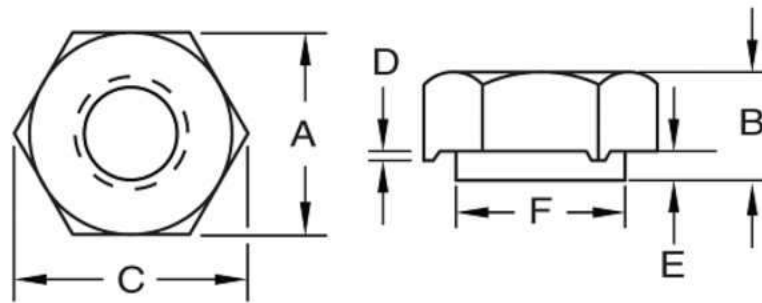
WELD NUTS



3 Projection Hex Weld Nuts - Din 929 Specs

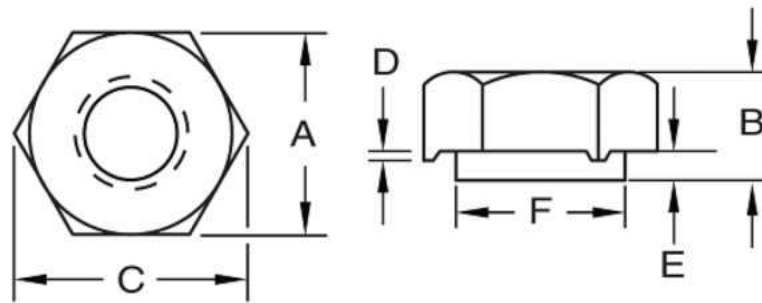
Thread Size	Width (mm)	Thickness (mm)	Pilot Height (mm)	Pilot Diameter (mm)	A (mm)	B (mm)	C Width Across Ref. Only (mm)	D (mm)	E (mm)	F (mm)
M10 X 1.5-6G	17.00	8.0	1.15	12.500	17.00	8.00	18.74	0.650	1.15	12.50
M10 X 1.25-6G	17.00	8.0	1.15	12.500	17.00	8.00	18.74	0.650	1.15	12.50
M10 X 1.5-6G	17.00	8.0	1.15	12.500	17.00	8.00	18.74	0.650	1.15	12.50
M12 X 1.75-6G	19.00	10.0	1.40	14.800	19.00	10.00	20.91	0.800	1.40	14.80
M12 X 1.75-6G	19.00	10.0	1.40	14.800	19.00	10.00	20.91	0.800	1.40	14.80
M14 X 2.0-6G	22.00	11.0	1.80	16.800	22.00	11.00	24.27	1.000	1.80	16.80

Continue..



M16 X 2.0-6G	24.00	13.0	1.80	18.800	24.00	13.00	26.51	1.000	1.80	18.80
M16 X 2.0-6G	24.00	13.0	1.80	18.800	24.00	13.00	26.51	1.000	1.80	18.80
M16 X 2.0-6G	24.00	13.0	1.80	18.800	24.00	13.00	26.51	1.000	1.80	18.80
M3 X 0.5-6G	7.50	3.0	0.55	4.500	7.50	3.00	8.15	0.250	0.55	4.50
M3 X 0.5-6G	7.50	3.0	0.55	4.500	7.50	3.00	8.15	0.250	0.55	4.50
M4 X 0.7-6G	9.00	3.5	0.65	6.000	9.00	3.50	9.83	0.350	0.65	6.00
M4 X 0.7-6G	9.00	3.5	0.65	6.000	9.00	3.50	9.83	0.350	0.65	6.00

Continue..



M4 X 0.7-6G	9.00	3.5	0.65	6.000	9.00	3.50	9.38	0.350	0.65	6.00
M5 X 0.8-6G	10.00	4.0	0.70	7.000	10.00	4.00	10.95	0.400	0.70	7.00
M5 X 0.8-6G	10.00	4.0	0.70	7.000	10.00	4.00	10.95	0.400	0.70	7.00
M6 X 1.0-6G	11.00	5.0	0.75	8.000	11.00	5.00	12.02	0.450	0.75	8.00
M6 X 1.0-6G	11.00	5.0	0.75	8.000	11.00	5.00	12.02	0.450	0.75	8.00
M8 X 1.25-6G	14.00	6.5	0.90	10.500	14.00	6.50	15.38	0.500	0.90	10.50
M8 X 1.25-6G	14.00	6.5	0.90	10.500	14.00	6.50	15.38	0.500	0.90	10.50

DEDICATED IMPEX CO.

D - 189, Industrial Focal Point, Patiala
147003 Punjab, India
info@dicfasteners.com
+91-95922-28222



DiCFASSTENERS

A Brand by Dedicated Impex Co.